



**akdeio**®

forest products ground materials  
import export  
marketing industry and trade  
**LIMITED COMPANY**



**ASTONLOUIS**  
LUXURY PARQUET

# HERRINGBONE CATALOG

**akdeio**

Forest Products Ground Materials Import Export Marketing Industry and Trade  
LIMITED COMPANY

Mobile: +90 532 500 51 52 Mobile Company: +90 532 250 65 29

Phone: +90 212 111 11 11

Address: Atakent Mah. 243. Sk. No:6 Tema İstanbul Sitesi 7/B No:1 Halkalı / K.çekmece İstanbul / TÜRKİYE

Address: Khelvachauri, Akhalshehis Meurneoba Mah. 3-CU Sk. No: 26 Batumi / GEORGIA

Akdeio Orman Ürünleri Zemin Malzemeleri İthalat İhracat Pazarlama San. ve Tic. LTD. ŞTİ.



[www.akdeio.com.tr](http://www.akdeio.com.tr)

[info@akdeio.com.tr](mailto:info@akdeio.com.tr)

[onder@akdeio.com.tr](mailto:onder@akdeio.com.tr)

[akdeio](https://www.facebook.com/akdeio)

[akdeioorman](https://www.instagram.com/akdeioorman)

Ürünlerimizi kişiselleştirmek için her zaman tüm ihtiyaçları dinleriz . Felsefemiz, eski el işçiliğın kalitesini, modern ve yaratıcı bir yaklaşımla harmanlayıp yıllar boyunca koruduğumuz gerçeğidir.İşlem yöntemleri geçmişe göre değışmiş ve gelişmiş olmasına rağmen, bu değerli malzemeye duyduğumuz sevgi geçmişten günümüze değışmeden kalmıştır ve bu tutku ürettiğımız ahşap ürünlerimizi zenginleştirmemizi sağlamıştır.Şirketimizin kökleri ürünlerimizi ve çalışma şeklimizi karakterize eden değerlerin kanıtıdır. 1963 yılında küçük bir atölye ile başladığımız bu macera şirketimizin uzun yıllar boyunca ahşap parke üreticiliğı ile elde ettiğı tecrübe,bilgi ve birikimleri 2018 yılında butik bir Laminat parke üretim tesisleri kurmasına vesile olmuştur.Güvenilir ve dayanıklı ahşap zeminler üreterek, doğaya zarar vermemeye dikkat ve özen gösteriyoruz.Ahşap zeminler bizim tutkumuz ;felsefemiz işimizin yüksek kalitesi. Ahşapın orijinal kokusunu ve hissini koruyan renk ve dokuları tasarlamaya çalışıyoruz.Müşterilerimiz için bu kadar değerli ürünleri üretebilmek için geri dönüşümü olan ormanlardan üretilen hammaddeleri tercih ediyoruz.Yıllar önce başlattığımız her müşterimiz için bir fidan dikimine aralıksız devam ediyoruz

We always listen to all needs to personalize our products. Our philosophy is the fact that we blend and maintain the quality of old craftsmanship with a modern and creative approach for many years.Although the process methods have changed and developed according to the past, our love for this valuable material has remained unchanged from the past to the present and this passion has enabled us to enrich the wood products we produce. The roots of our company are proof of the values that characterize our products and the way we work. This adventure, which we started with a small workshop in 1963, has led our company to establish a boutique Laminat flooring production facilities in 2018 with its experience and knowledge gained through the production of wooden parquet for many years.We produce safe and durable wooden floors and take care not to harm the nature.Wooden floors are our passion, our philosophy is the high quality of our work. We are trying to design the colors and textures that protect the original smell and feel of the wood. We prefer raw materials produced from recyclable forests to produce such valuable products for our customers.

**ASTONLOUIS PARQUET**

Aston Louis Herringbone laminat parke, gerek masif ahşap parke ile aynı etkiyi vermek için tasarlanmıştır. Aston Louis Herringbone Laminat parkeyi standart ve düz laminat parkelerden göz alıcı, benzersiz ve dikkat çekici hale getiren, modern bir yapıya sahip olmasıdır. Aston Louis Herringbone koleksiyonu, mevcut Herringbone Lamine koleksiyonuna bir alternatiftir. AC4 ticari sınıflarına sahiptir, bu yüzden gerçekten zorlayıcı ve ticari binalarda kullanılabilirler, ayrıca herhangi bir ev için uygun olmaktan da öte bir salon, mutfak, yemek odası veya koridor için idealdir ve özellikle Herringbone Laminat parke dekorlarının bir sohbet ortamı yaratacağından emin olabilirsiniz.

Aston Louis Herringbone Laminat Parke 32 Class.AC.4 aşınmazlık derecesi ve 8MM\*140MM\*595MM ölçülerinde konut ve ticari ortamlar için mükemmel olan rahatlatıcı bir etkileşim sağlamaya yardımcı olur.

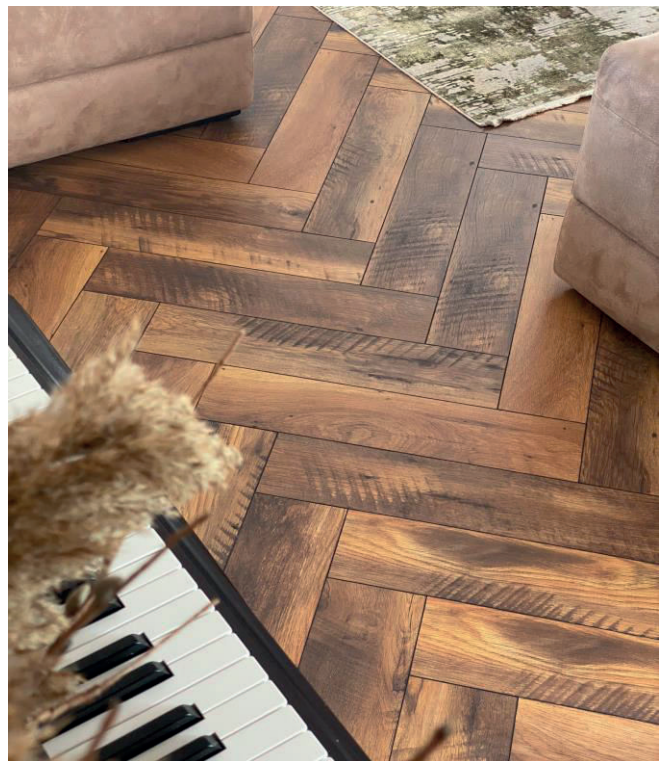
Aston Louis Herringbone laminate flooring is designed to give the same effect as real solid wood flooring. Aston Louis Herringbone Laminate flooring has a modern structure that makes it striking, unique and remarkable than standard and flat laminate flooring.

The Aston Louis Herringbone laminate collection is alternative Herringbone engineering floor collection. It has AC4 commercial classes, so it can be used in truly demanding and commercial buildings, and is more than suitable for any home. Ideal for a lounge, kitchen, dining room or hallway. Especially Herringbone Laminate flooring decors are surely will create a chat environment

**ASTONLOUIS PARQUET**

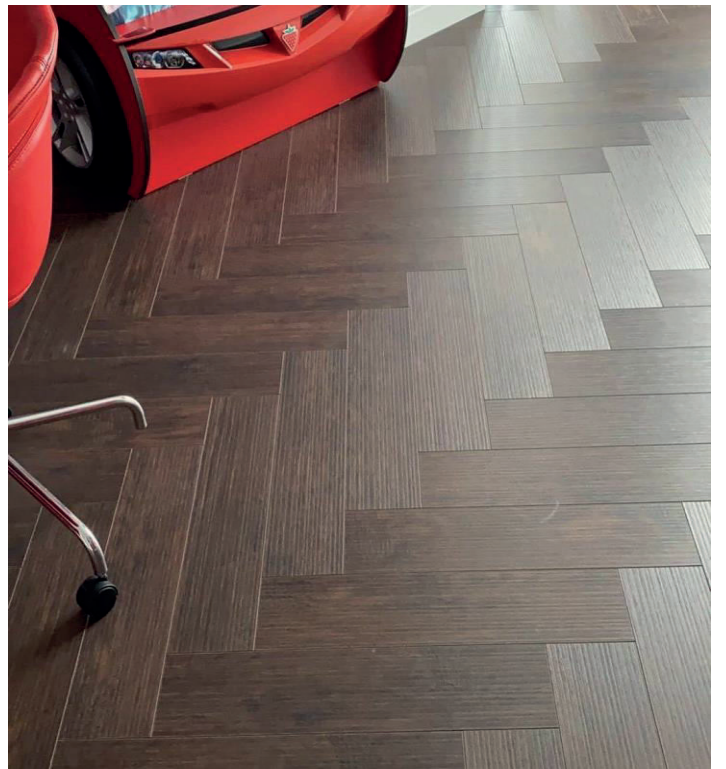
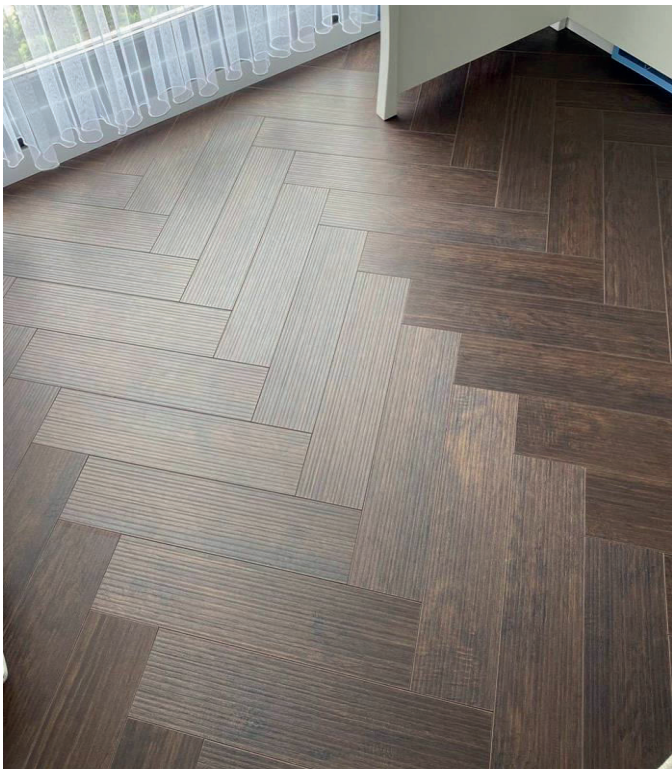


**BREA HERRINGBONE 8\*140\*595MM**



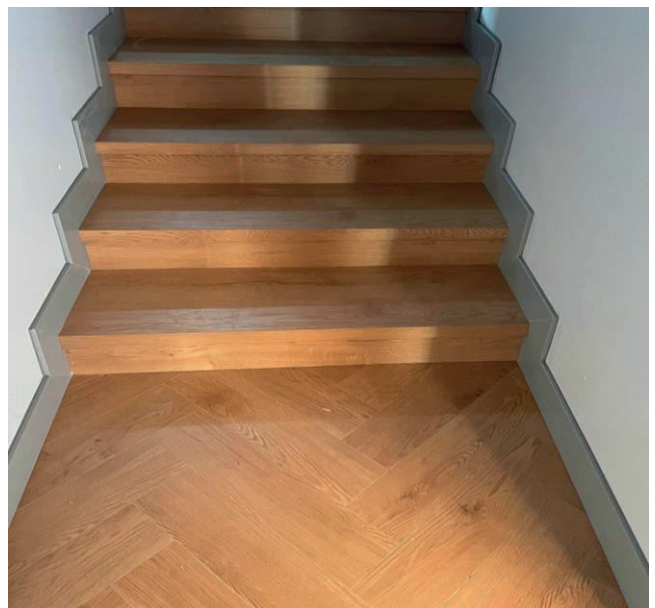
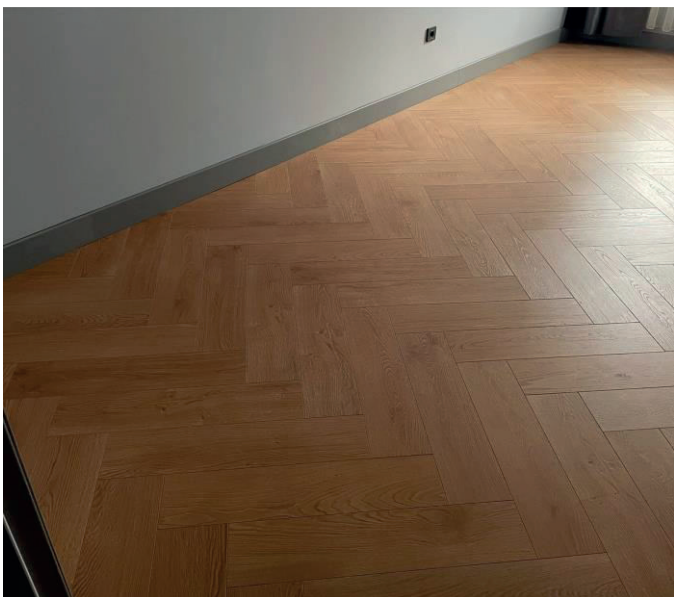


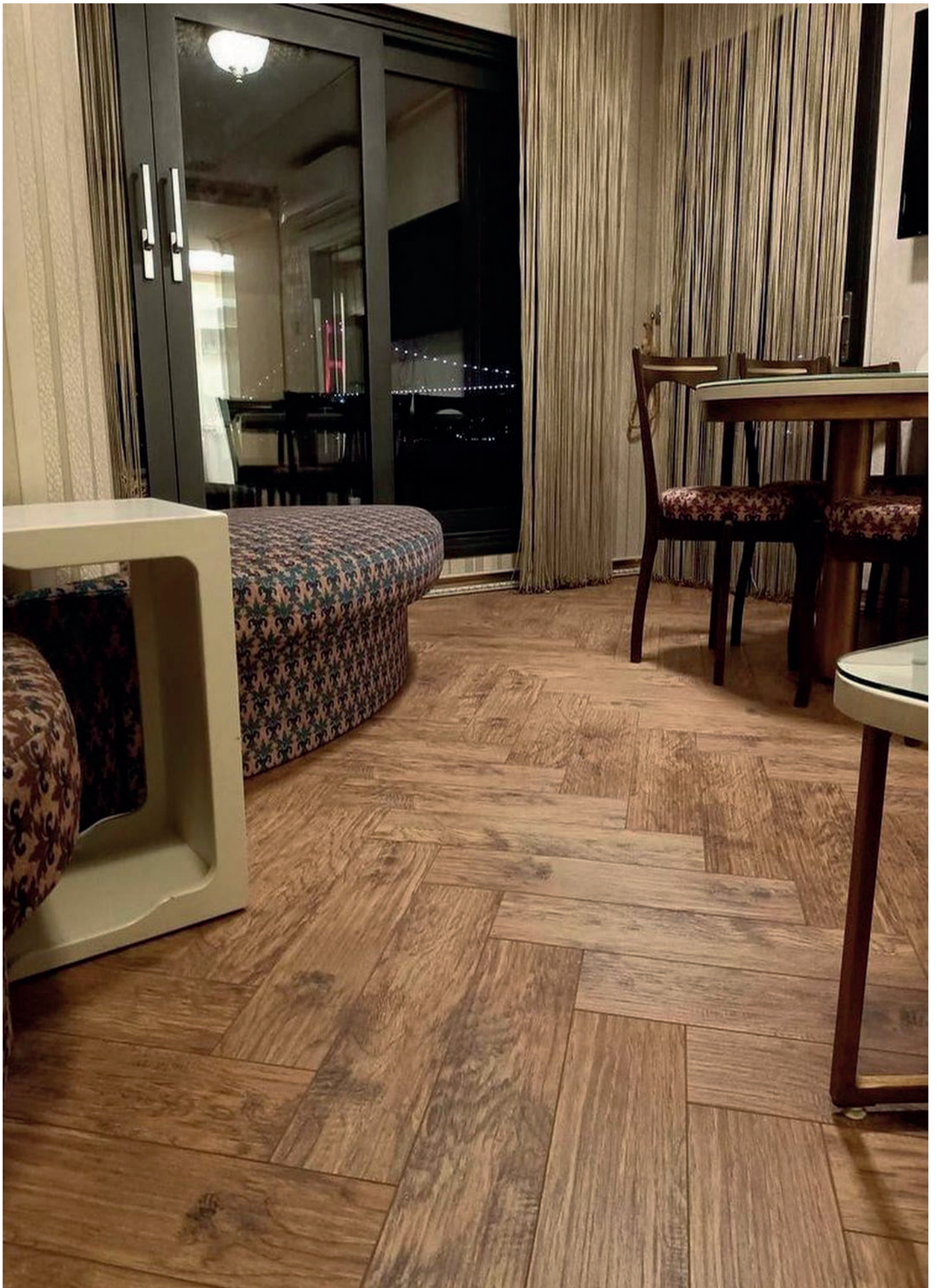
**VERSAILLES HERRINGBONE 8\*140\*595MM**





ENGLISH OAK NATUR HERRINGBONE 8\*140\*595MM



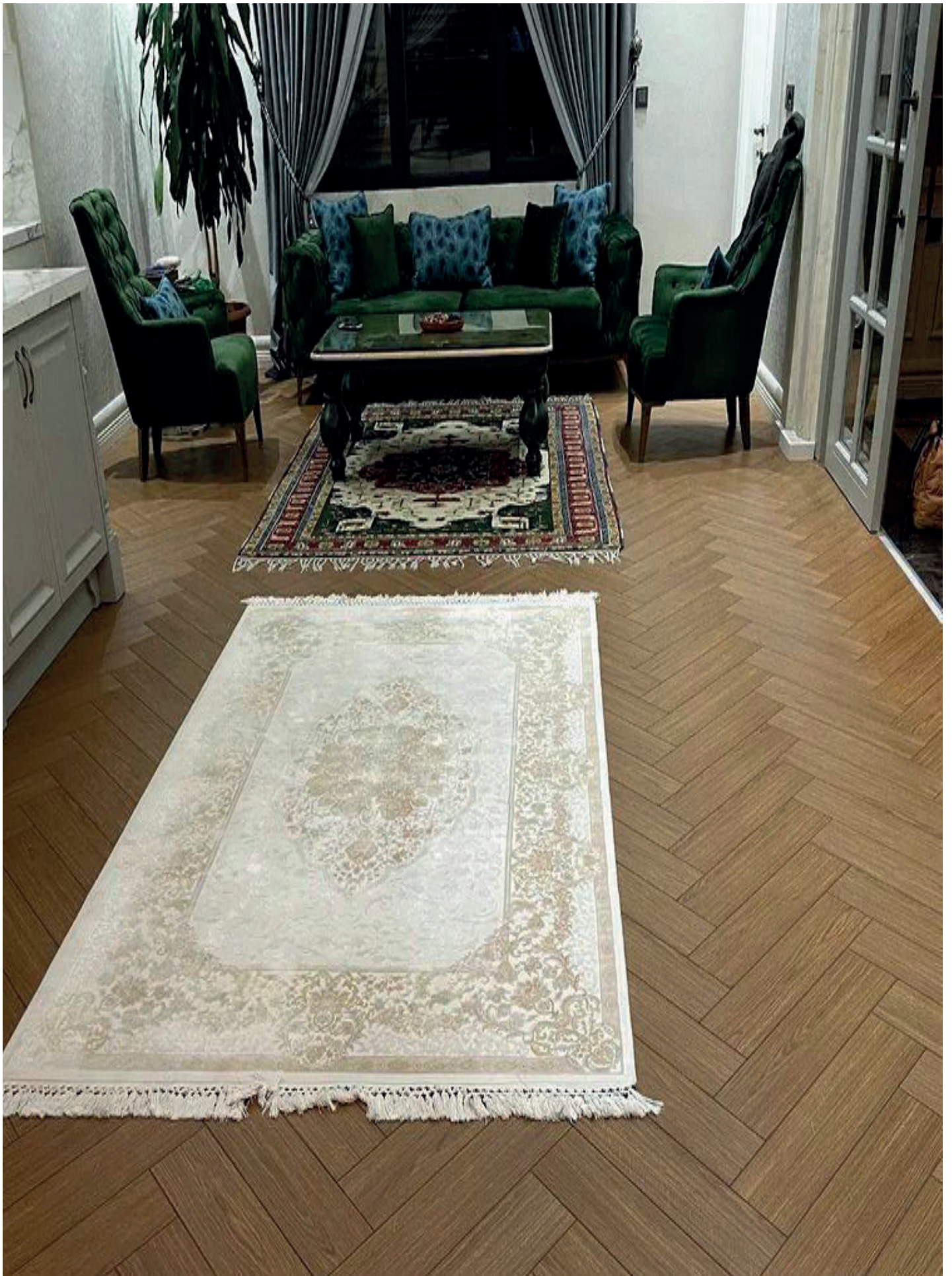


DUCCE HERRINGBONE 8\*140\*595MM

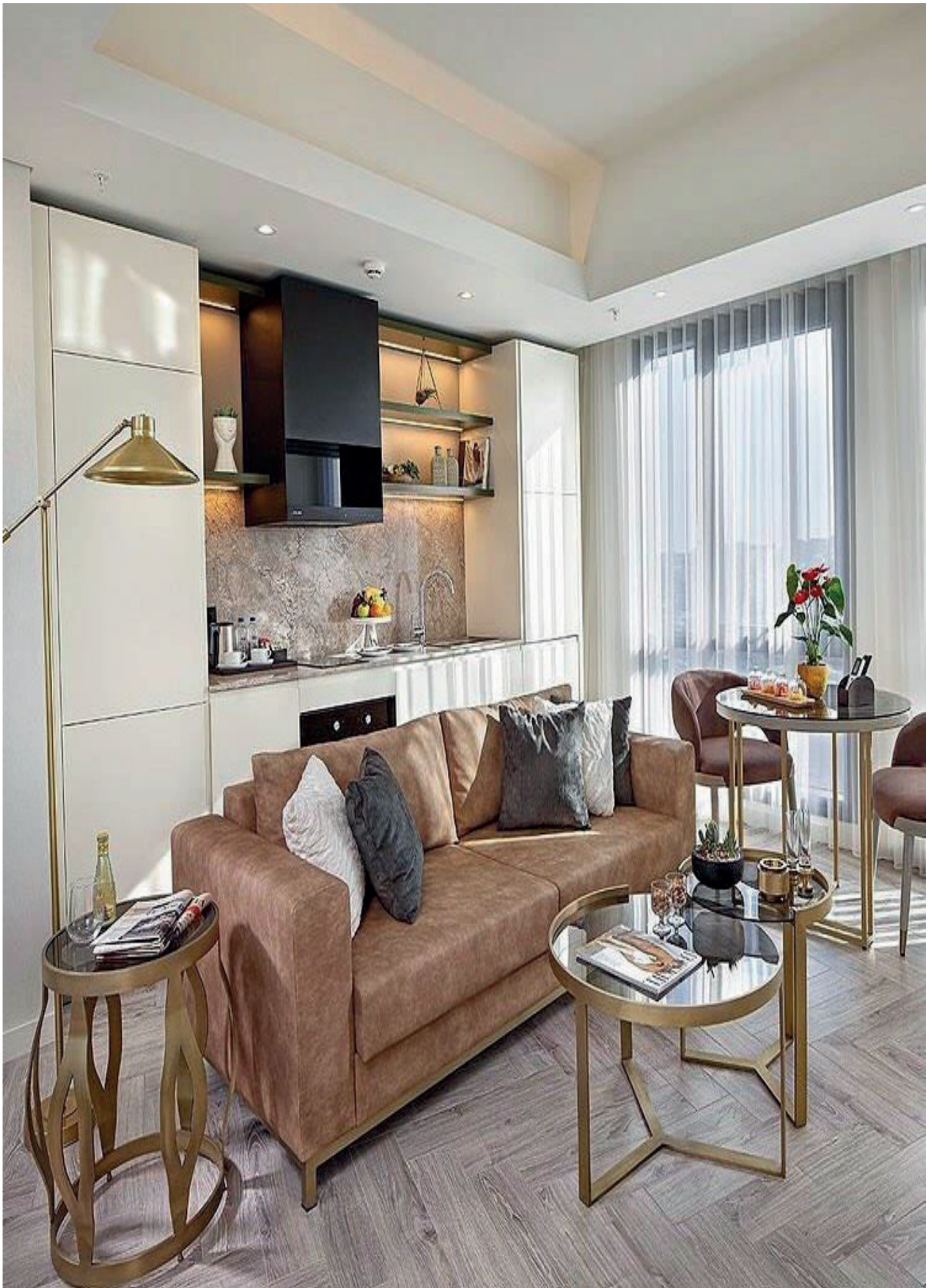


SILVERADO DARK OAK HERRINGBONE 8\*140\*495MM





CAVALLO HERRINGBONE 8\*140\*595MM



SILVERADO GREY OAK HERRINGBONE 8\*140\*595MM



**WHITE PALACE HERRINGBONE 8\*140\*595MM**



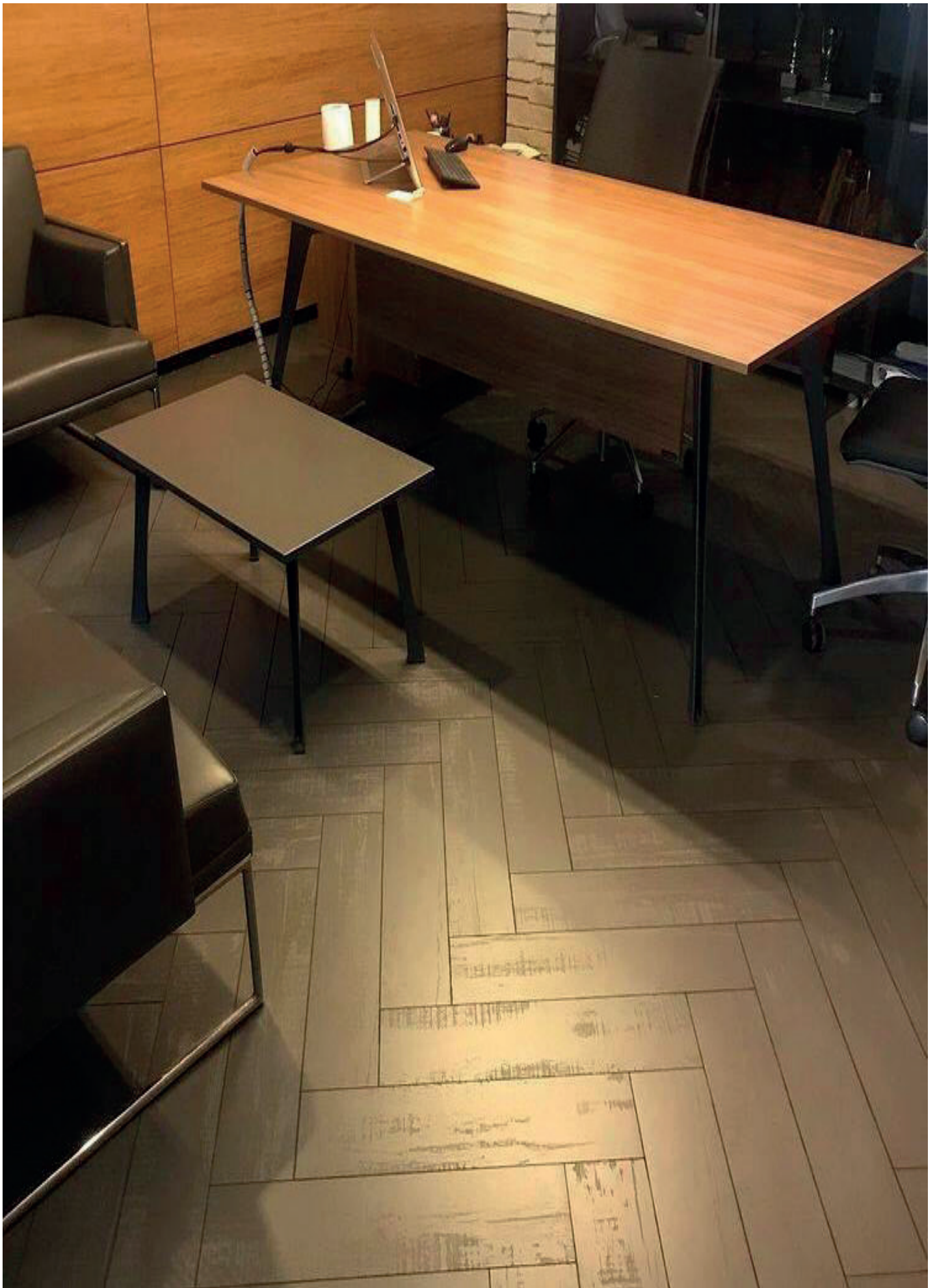
**BURUNETTA HERRINGBONE 8\*140\*595MM**



NOCE HERRINGBONE 8\*140\*595MM



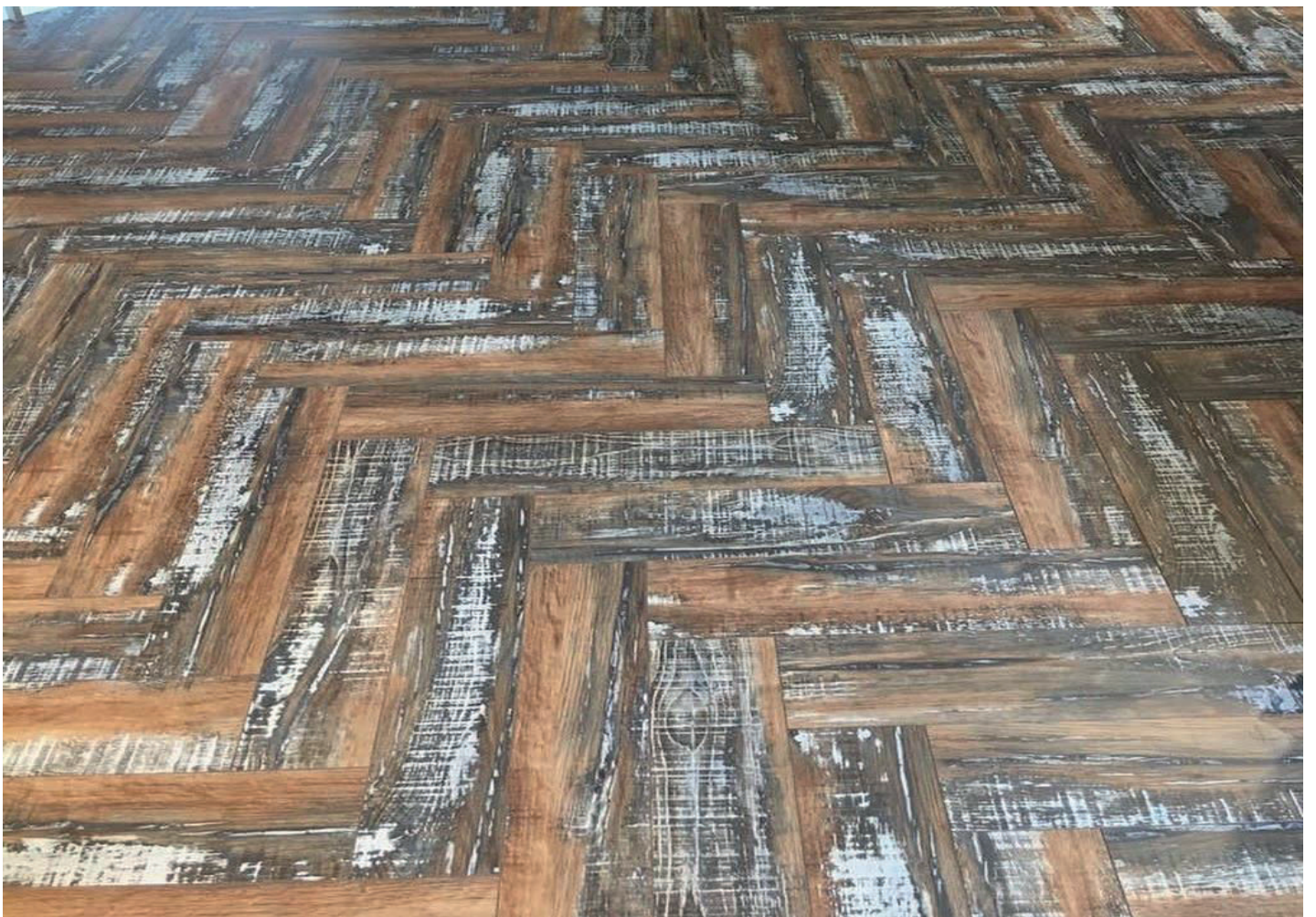
**BELLEVUE HERRINGBONE 8\*140\*595MM**



VETRICE HERRINGBONE 8\*140\*595MM



**ENGLISH OAK LIGHT HERRINGBONE 8\*140\*595MM**

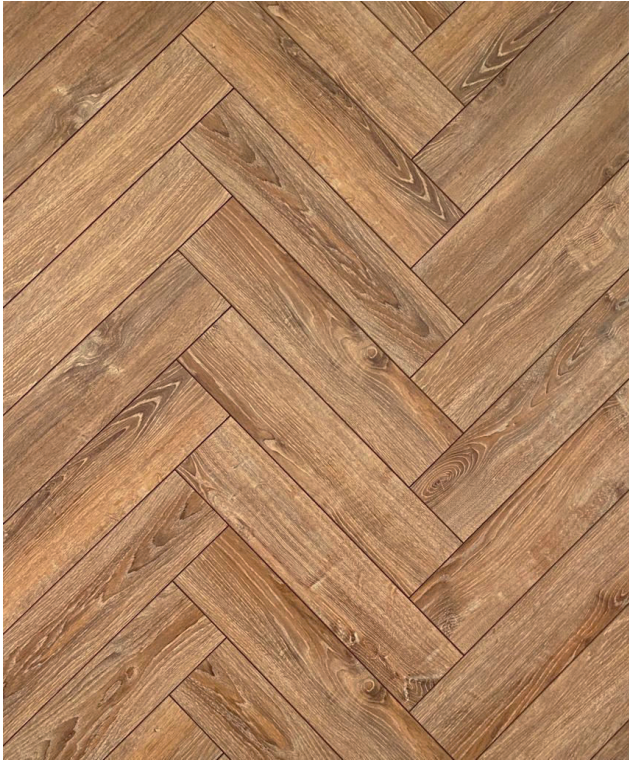


**RARO HERRINGBONE 8\*140\*595MM**

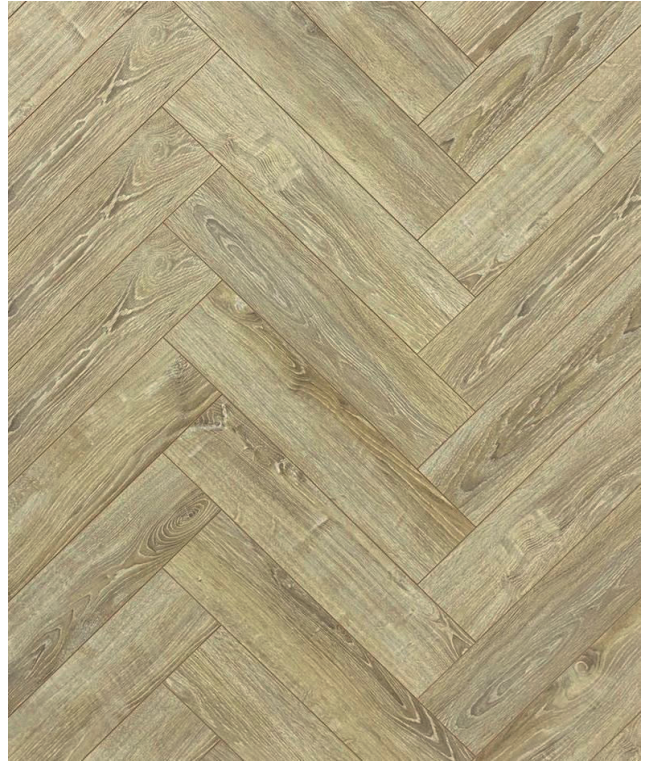


**ARAGONIT HERRINGBONE 8\*140\*595M**





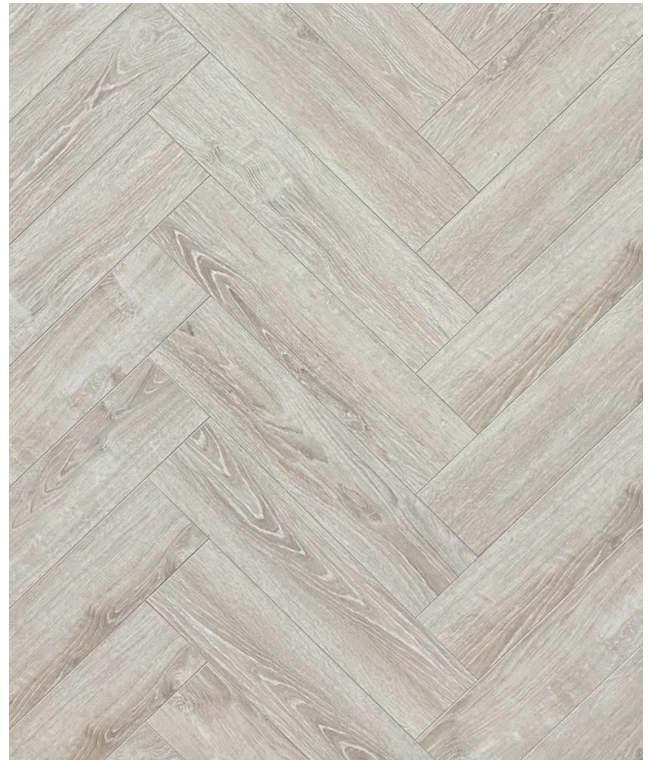
**SILVERADO DARK OAK**



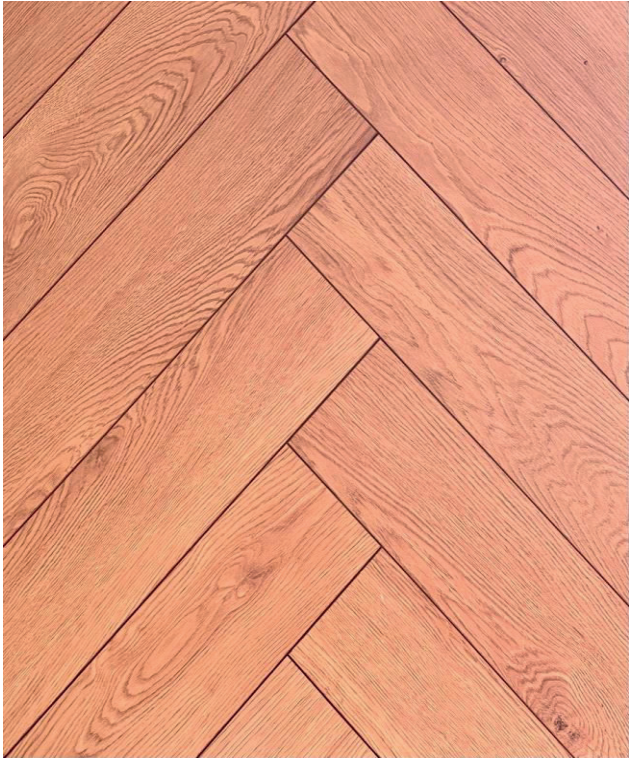
**SILVERADO LIGHT OAK**



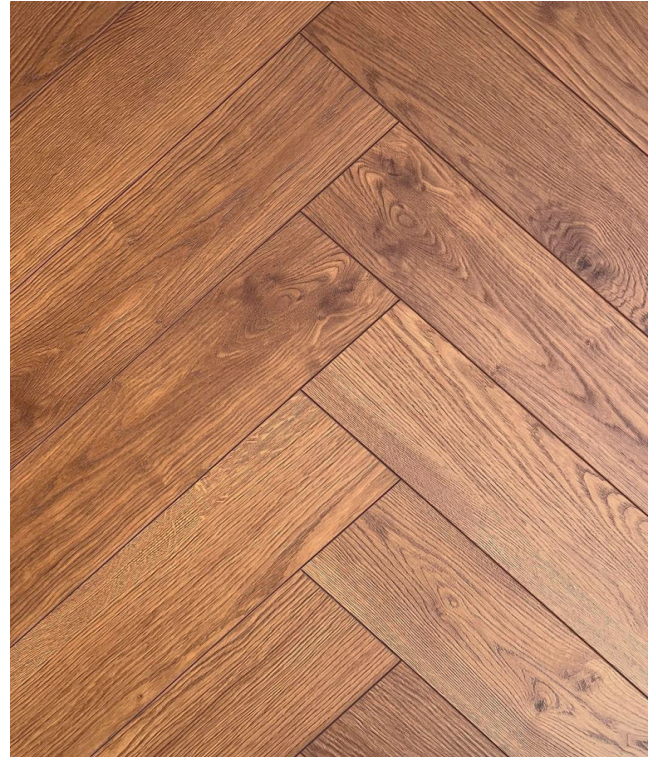
**SILVERADO GREY OAK**



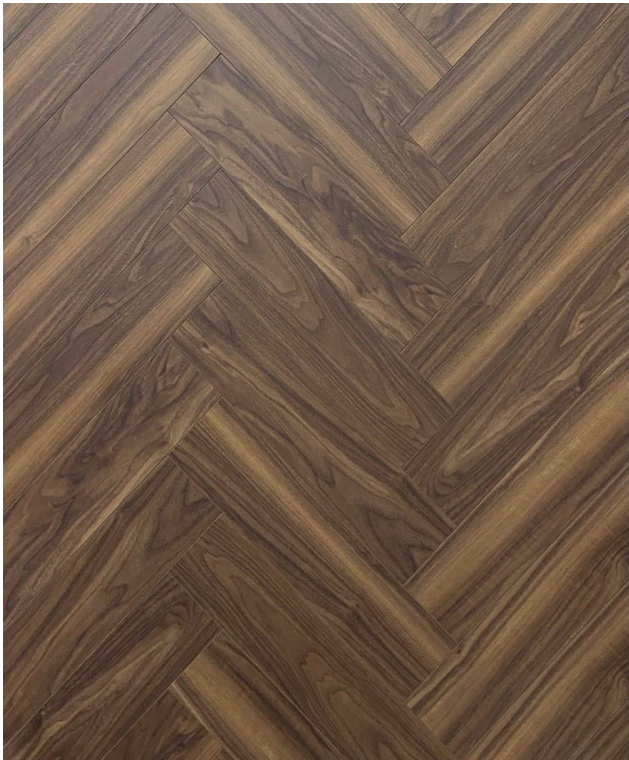
**SILVERADO CREAM OAK**



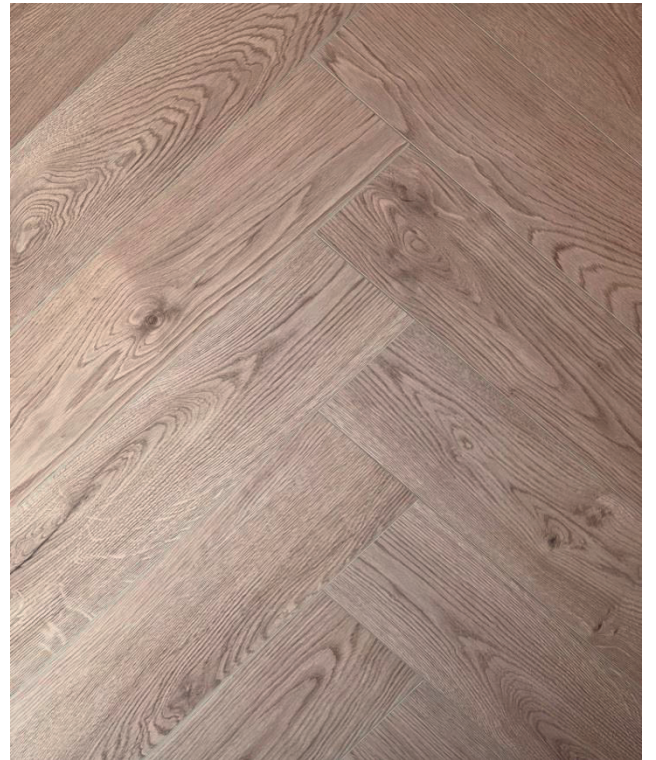
**ENGLISH NATUR OAK**



**ENGLISH DARK OAK**



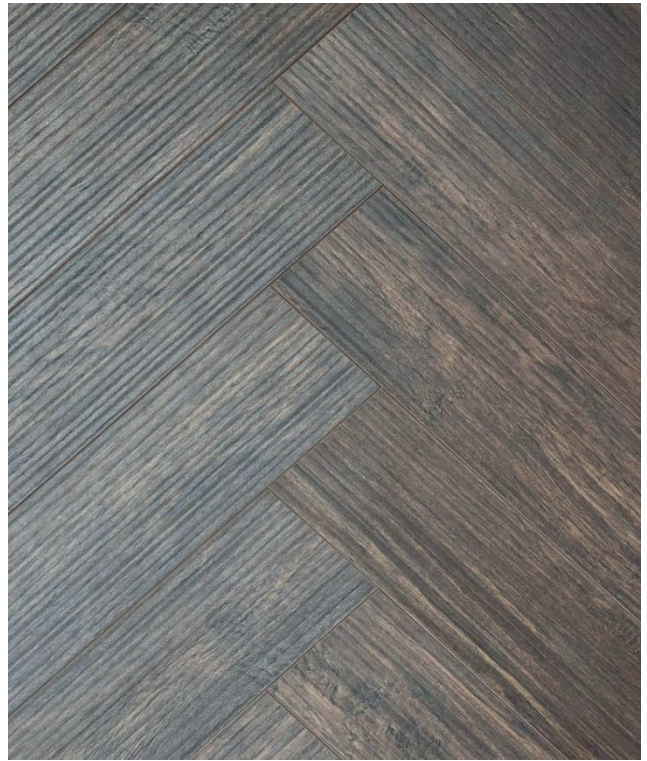
**NOCE**



**ENGLISH OAK LIGHT**



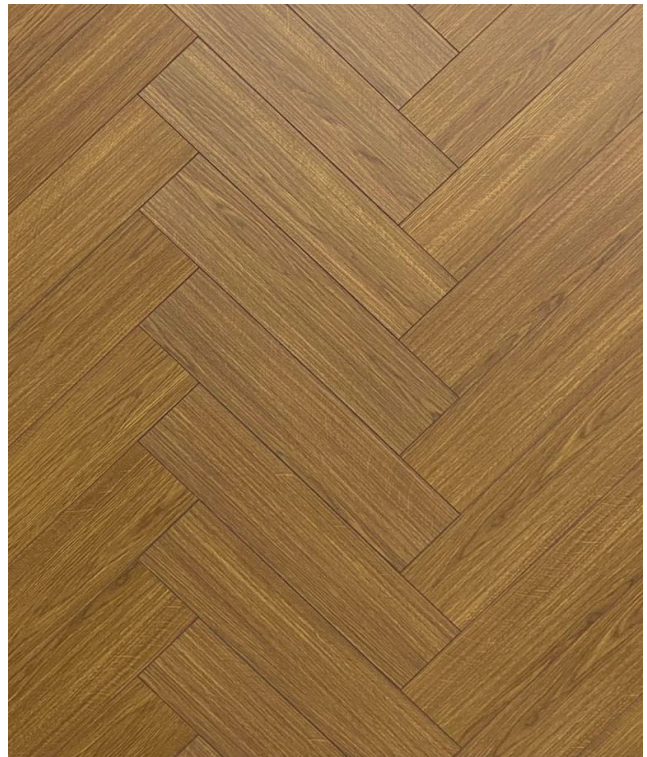
**DUCCE**



**VERSAILLES**



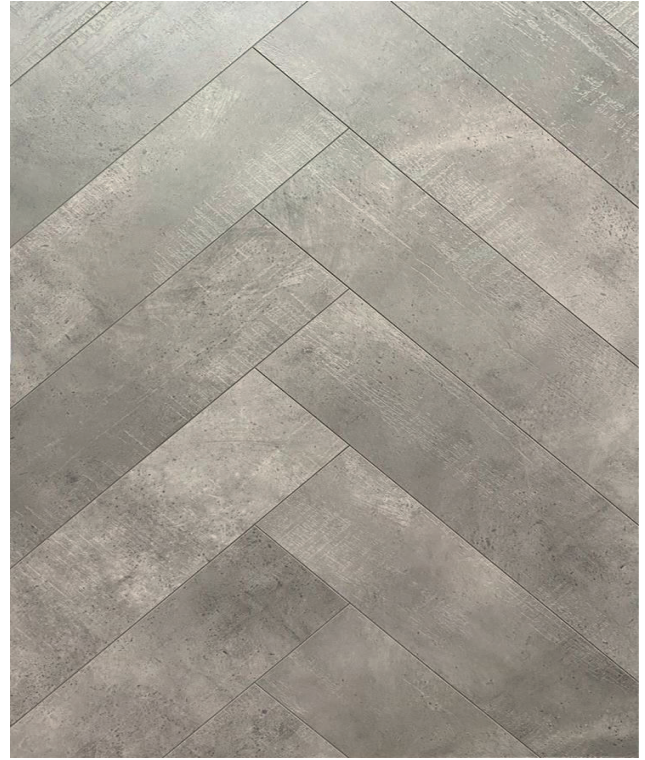
**BELLEVUE**



**CAVALLO**



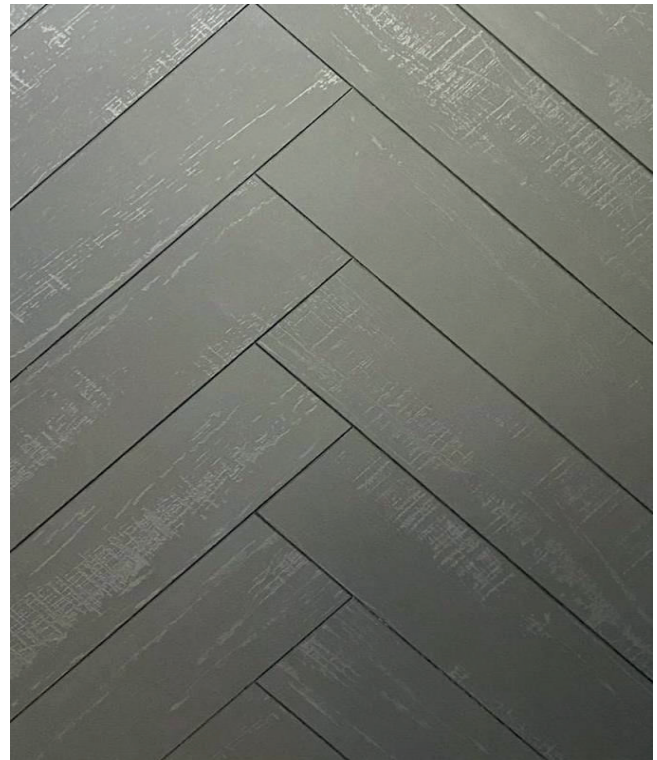
**ARAGONIT**



**GARNET**



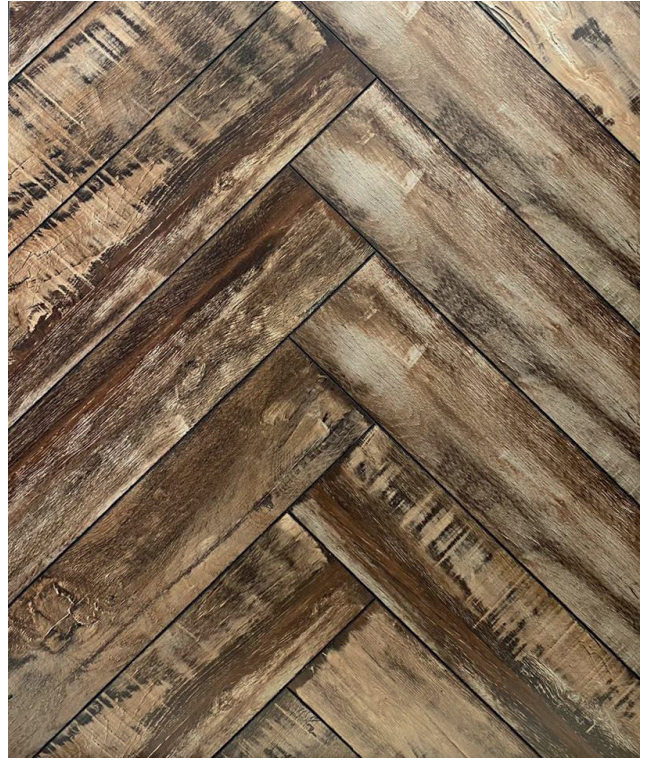
**BURUNETTA**



**VETRICE**



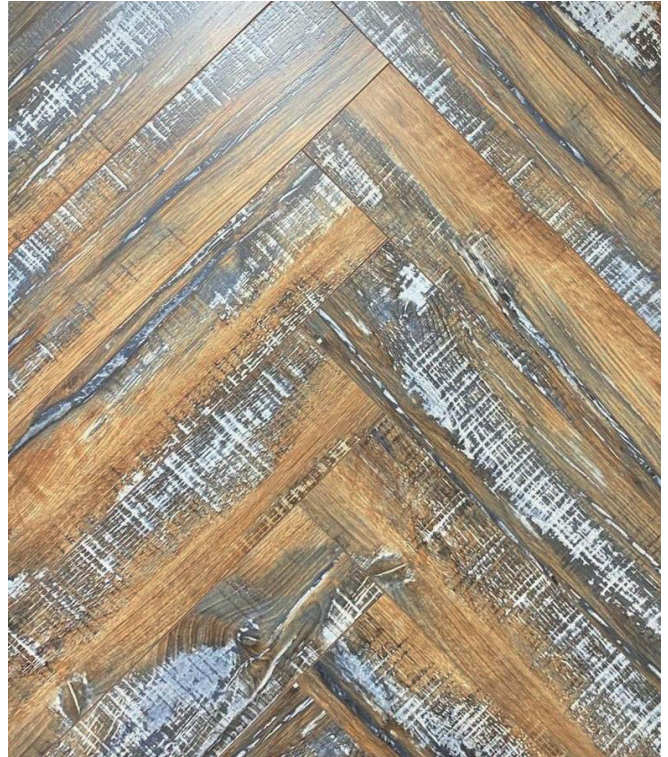
**WHITE PALACE**



**CAPELLA**



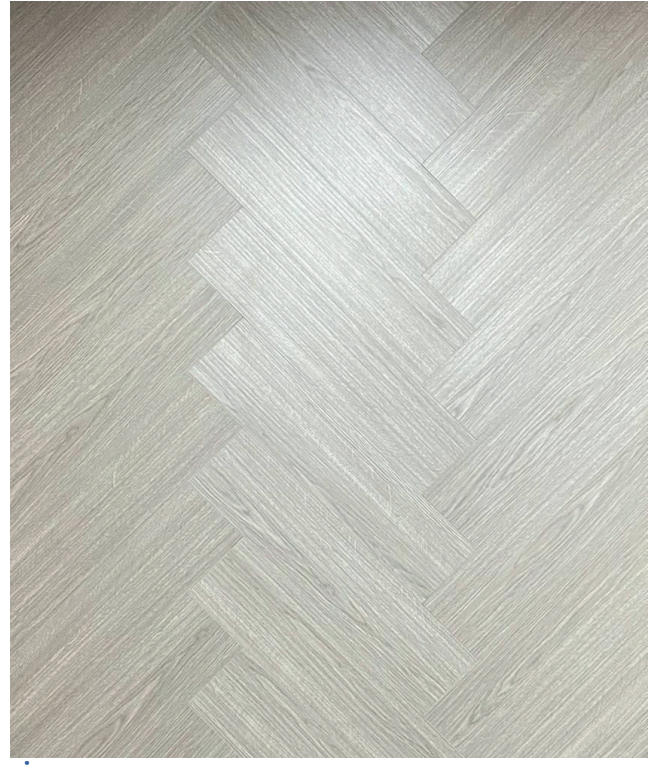
**VEGA**



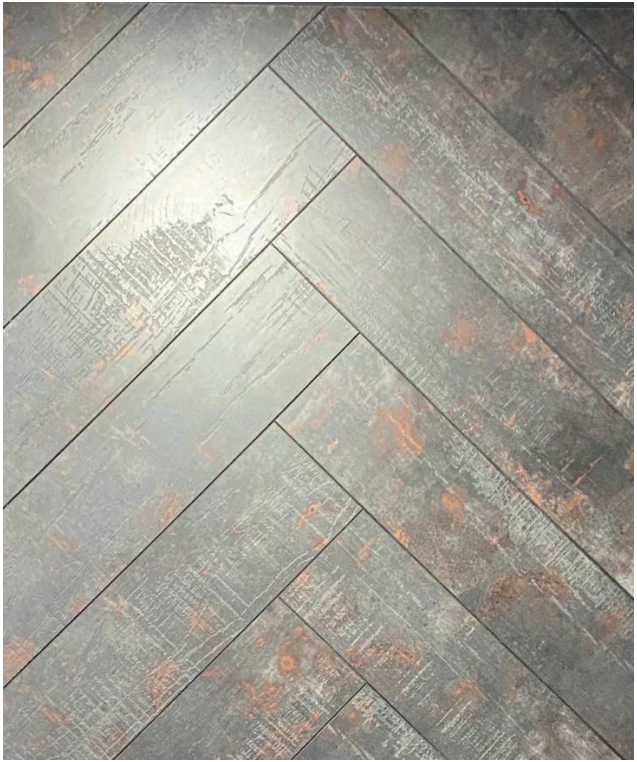
**RARO**



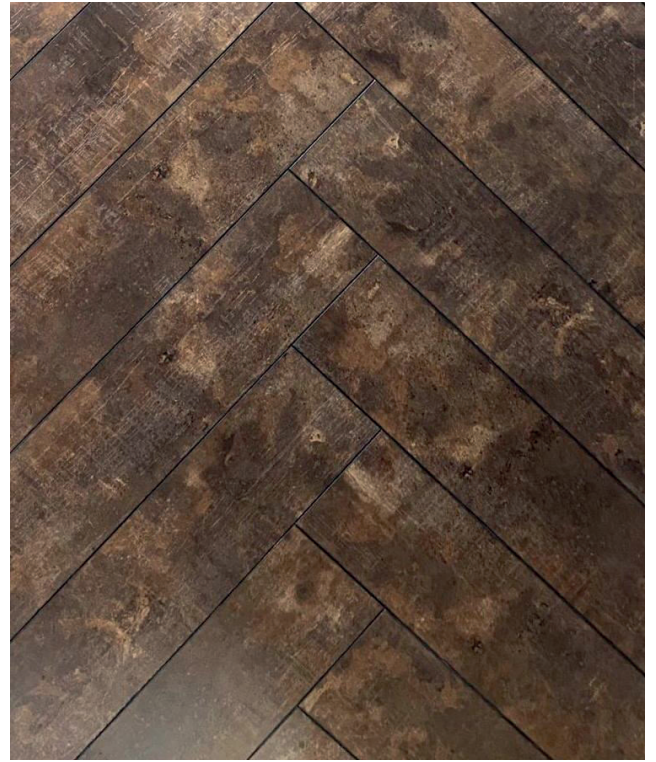
**BRERA**



**RIGEL**



**HYPERION**



**GHOST**



**1.OVERLAY:** Film layer impregnated with aluminum oxide and melamine resin.

Thanks to aluminum oxide, it has gained resistance against abrasion, scratching and heat.

In addition, melamine resin which melts and hardens during pressing reduces the adhesion of dirt and stains on the surfaces, helps easy cleaning and provides hygiene.

**2.DECOR PAPER :**It is obtained by transmitting one-to-one photographs of natural trees to special papers by high-tech methods

**3.HDF :**High density, non-carcinogenic substance (E1 standard) and moisture resistant fiber board.

**4.BALANCE PAPER:**Produced from paper obtained from high stabilized wood type fibers,impregnated with melamine resin,Moisture resistance.its a layer that provides Parquet boards.Paraffin:Paraffin is applied to the lock edges of the parquets during production and and creates film layer. It makes the joints of the panels more resistant to moisture.

## FEATURES OF ASTONLOUIS LAMINATED PARQUETS

Abrasion Resistance

Suitable for underfloor heating

Natural

Easy Cleaning

Stain-Proof

Stratch-Proof

Suitable for home,Office and workplaces

Light-Resistance

Non-carcinogenic substances(E1 standard)



[www.astonlouis.com](http://www.astonlouis.com)

[info@astonlouis.com](mailto:info@astonlouis.com)

HEAD OFFICE: PEGA KARTAL KULE. NO:6 A/BLOK OFFICE:125 SOĞANLIK  
YENİ MAH. KARTAL/İSTANBUL/TURKEY



**akdeio**<sup>®</sup>

forest products ground materials  
import export  
marketing industry and trade  
**LIMITED COMPANY**

*Türkiye*



**ASTONLOUIS**  
LUXURY PARQUET

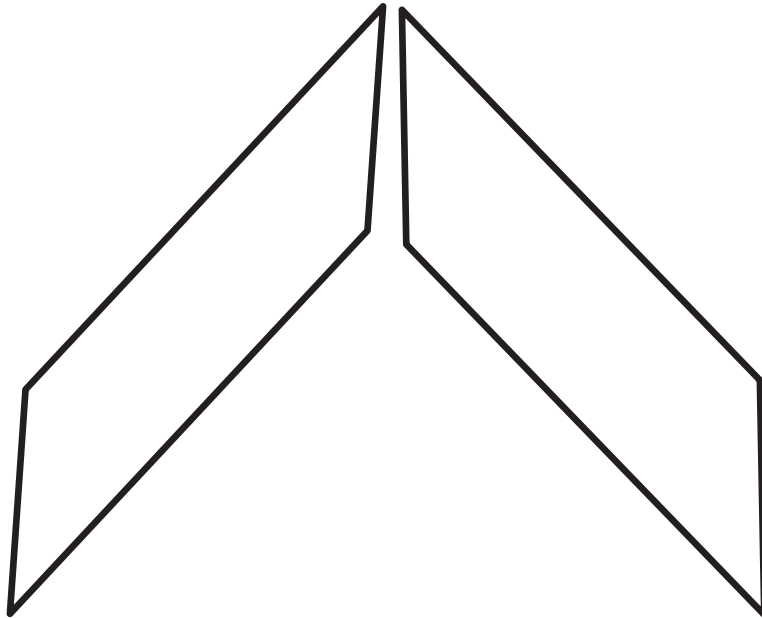
# FRANCES CHEVRON CATALOG



Ürünlerimizi kişiselleştirmek için her zaman tüm ihtiyaçları dinleriz . Felsefemiz, eski el işçiliğın kalitesini, modern ve yaratıcı bir yaklaşımla harmanlayıp yıllar boyunca koruduğumuz gerçeğidir.İşlem yöntemleri geçmişe göre değışmiş ve gelişmiş olmasına rağmen, bu değerli malzemeye duyduğumuz sevgi geçmişten günümüze değışmeden kalmıştır ve bu tutku ürettiğımız ahşap ürünlerimizi zenginleştirmemizi sağlamıştır.Şirketimizin kökleri ürünlerimizi ve çalışma şeklimizi karakterize eden değerlerin kanıtıdır. 1963 yılında küçük bir atölye ile başladığımız bu macera şirketimizin uzun yıllar boyunca ahşap parke üreticiliğı ile elde ettiğı tecrübe,bilgi ve birikimleri 2018 yılında butik bir Laminat parke üretim tesisleri kurmasına vesile olmuştur.Güvenilir ve dayanıklı ahşap zeminler üreterek, doğaya zarar vermemeye dikkat ve özen gösteriyoruz.Ahşap zeminler bizim tutkumuz ;felsefemiz işimizin yüksek kalitesi. Ahşapın orijinal kokusunu ve hissini koruyan renk ve dokuları tasarlamaya çalışıyoruz.Müşterilerimiz için bu kadar değerli ürünleri üretebilmek için geri dönüşümü olan ormanlardan üretilen hammaddeleri tercih ediyoruz.Yıllar önce başlattığımız her müşterimiz için bir fidan dikimine aralıksız devam ediyoruz

We always listen to all needs to personalize our products. Our philosophy is the fact that we blend and maintain the quality of old craftsmanship with a modern and creative approach for many years.Although the process methods have changed and developed according to the past, our love for this valuable material has remained unchanged from the past to the present and this passion has enabled us to enrich the wood products we produce. The roots of our company are proof of the values that characterize our products and the way we work. This adventure, which we started with a small workshop in 1963, has led our company to establish a boutique Laminat flooring production facilities in 2018 with its experience and knowledge gained through the production of wooden parquet for many years.We produce safe and durable wooden floors and take care not to harm the nature.Wooden floors are our passion, our philosophy is the high quality of our work. We are trying to design the colors and textures that protect the original smell and feel of the wood. We prefer raw materials produced from recyclable forests to produce such valuable products for our customers.

## ASTONLOUIS PARQUET



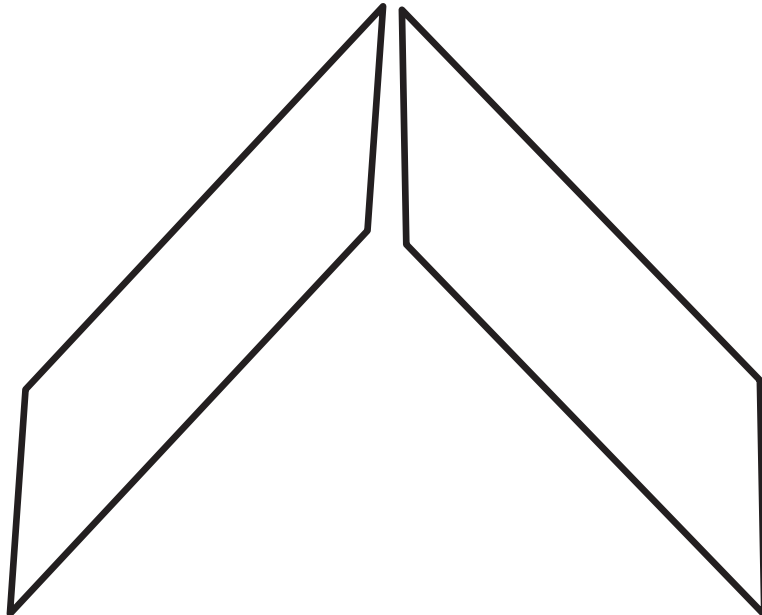
Aston Louis Frances Chevron laminat parke, gerçek masif ahşap parke ile aynı etkiyi vermek için tasarlanmıştır. Aston Louis Frances Chevron Laminat parkeyi standart ve düz laminat parkelerden göz alıcı, benzersiz ve dikkat çekici hale getiren, modern bir yapıya sahip olmasıdır. Aston Louis Frances Chevron koleksiyonu, mevcut Chevron Lamine koleksiyonuna bir alternatiftir. AC4 ticari sınıflarına sahiptir, bu yüzden gerçekten zorlayıcı ve ticari binalarda kullanılabilirler, ayrıca herhangi bir ev için uygun olmaktan da öte bir salon, mutfak, yemek odası veya koridor için idealdir ve özellikle Frances Chevron Laminat parke dekorlarının bir sohbet ortamı yaratacağından emin olabilirsiniz.

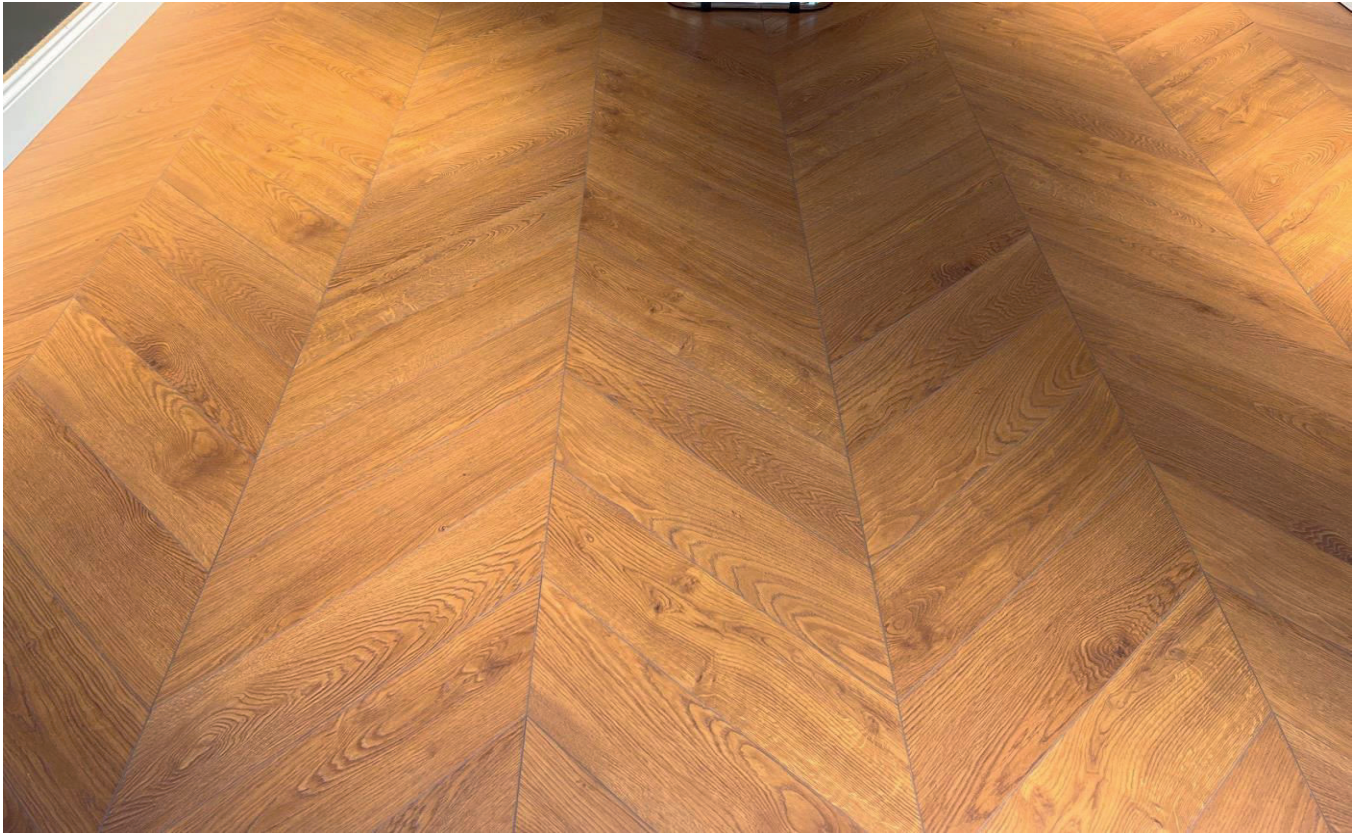
Aston Louis Frances Chevron Laminat Parke 32 Class.AC.4 aşınmazlık derecesi ve 8MM\*140MM\*565MM Ölçülerinde konut ve ticari ortamlar için mükemmel olan rahatlatıcı bir etkileşim sağlamaya yardımcı olur.

Aston Louis Frances Chevron laminate flooring is designed to give the same effect as real solid wood flooring. Aston Louis Frances Chevron Laminat flooring has a modern structure that makes it striking, unique and remarkable than standard and flat laminate flooring.

The Aston Louis Frances Chevron laminate collection is alternative Chevron engineering floor collection. It has AC4 commercial classes, so it can be used in truly demanding and commercial buildings, and is more than suitable for any home. Ideal for a lounge, kitchen, dining room or hallway. Especially Frances Chevron Laminat flooring decors are surely will create a chat environment

**ASTONLOUIS PARQUET**





**FRANCES CHEVRON ENGLISH OAK DARK 8MM X 140MM X 565MM**



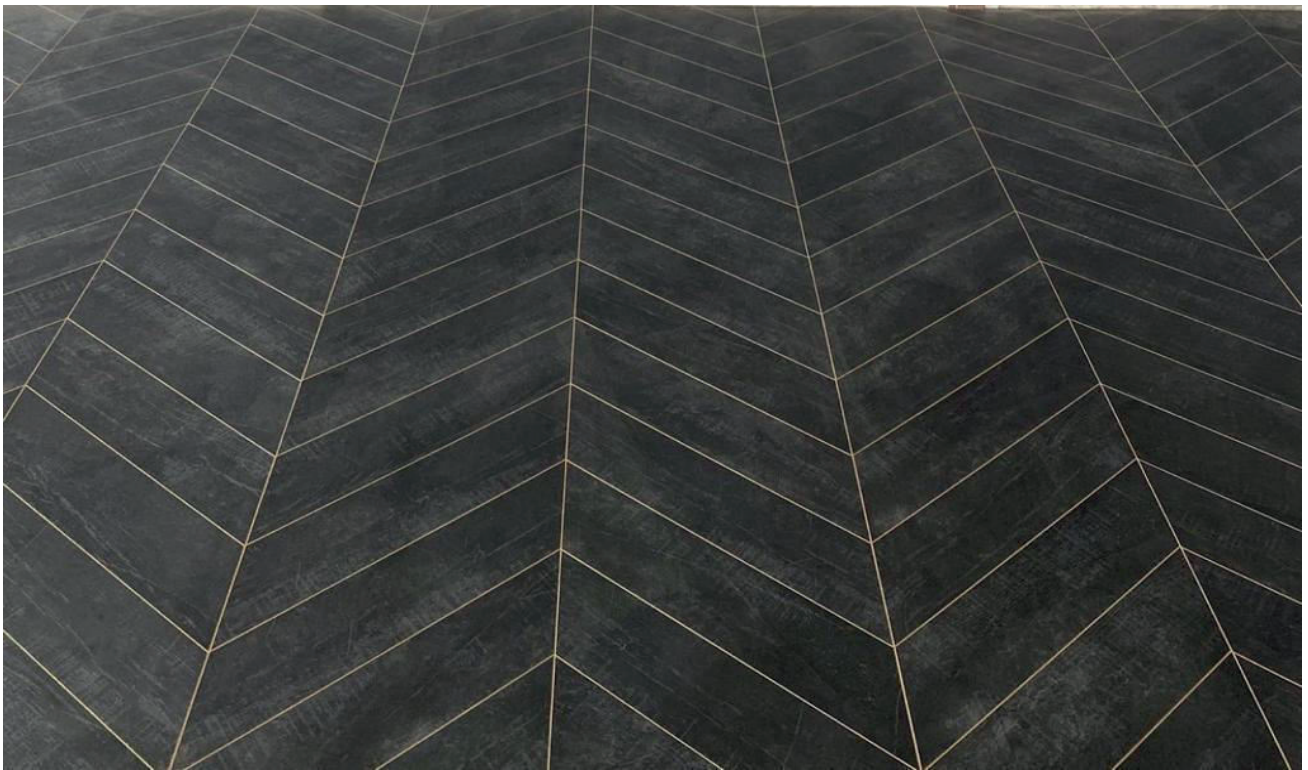
**FRANCES CHEVRON ENGLISH OAK NATUR 8MM X 140MM X 565MM**

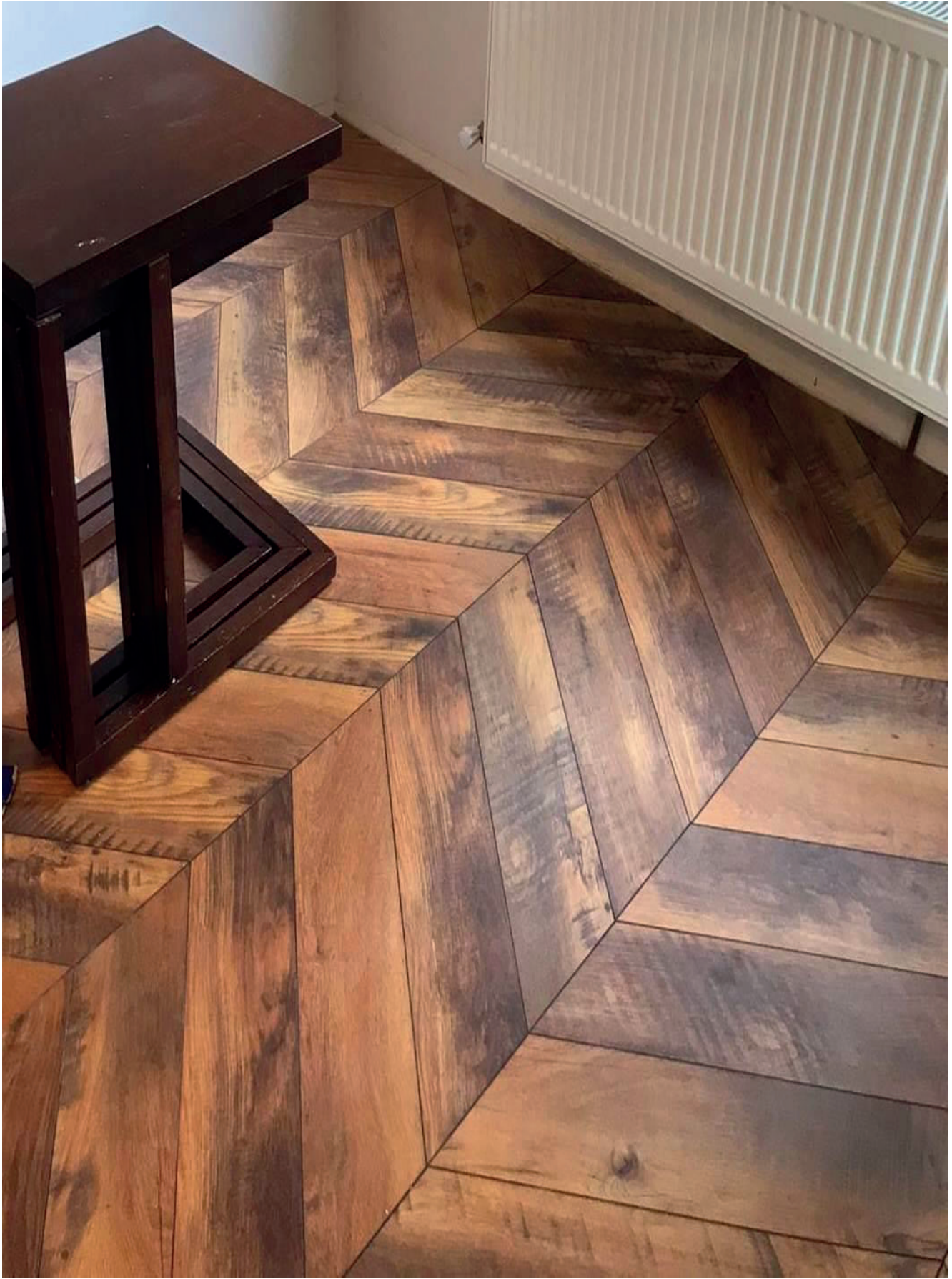


**FRANCES CHEVRON NITRO LIGHT 8MM X 140MM X 565MM**



**FRANCES CHEVRON NITRO DARK 8MM X 140MM X 565MM**

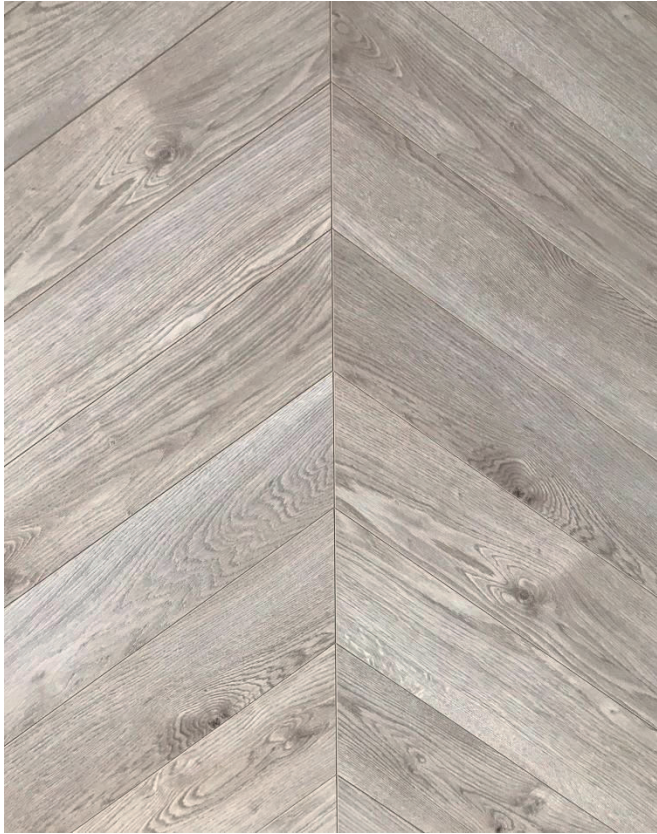




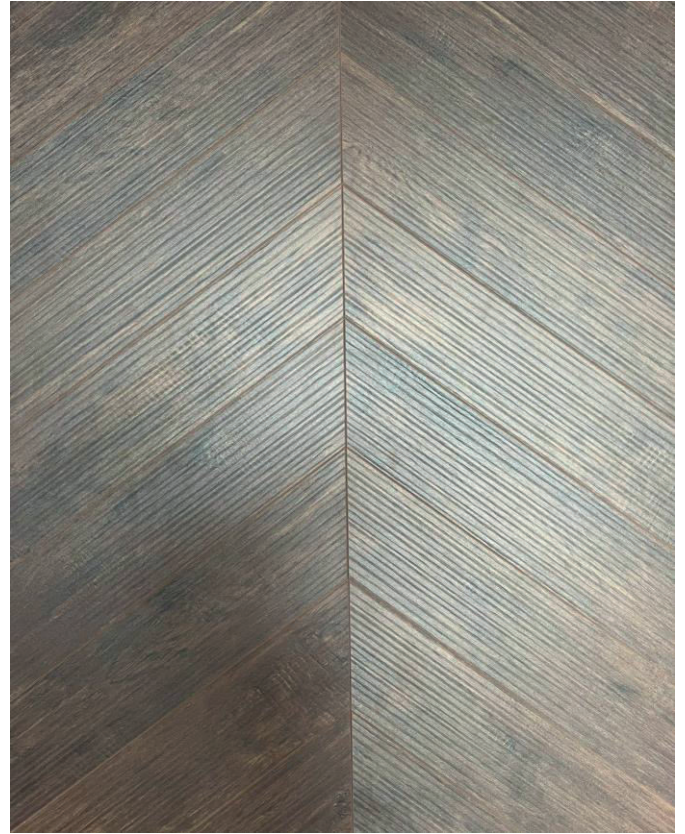
**FRANCES CHEVRON BRERA 8MM X 140MM X 565MM**



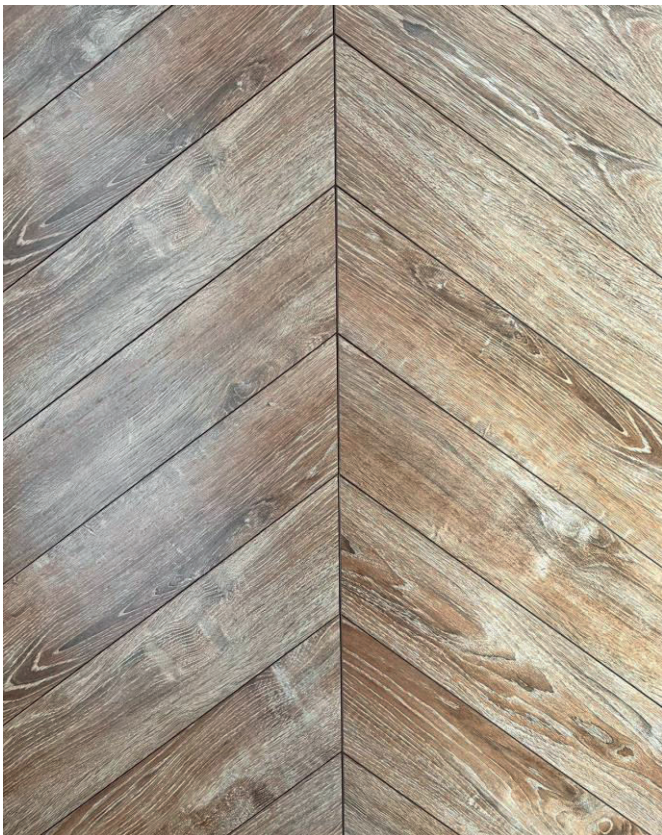
FRANCES CHEVRON NITRO GREY OAK 8MM X 140MM X 565MM



**FRANCES CHEVRON ENGLISH LIGHT OAK**  
**8MM X 140MM X 565MM**



**FRANCES CHEVRON VERSAILLES**  
**8MM X 140MM X 565MM**

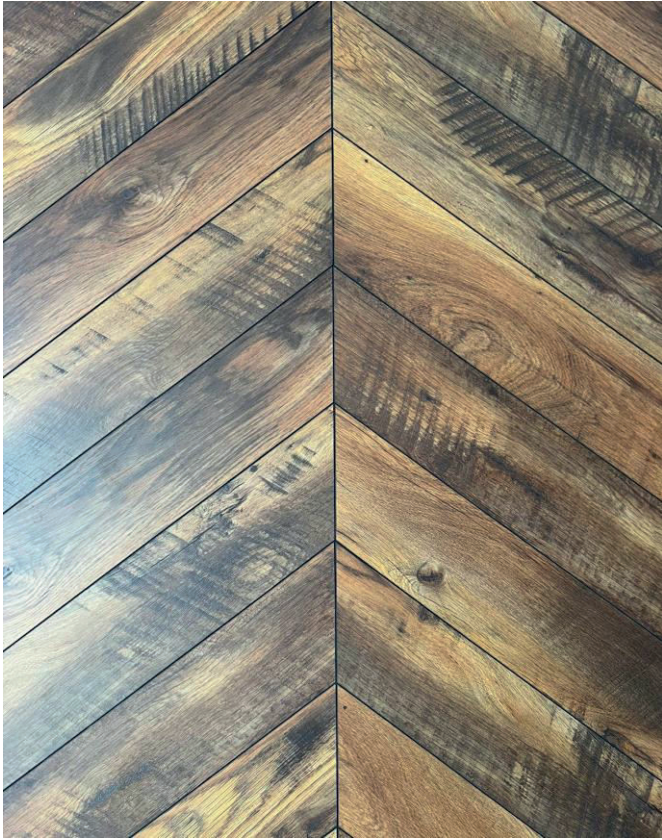


**FRANCES CHEVRON SILVERADO DARK OAK**  
**8MM X 140MM X 565MM**



**FRANCES CHEVRON SILVERADO GREY OAK**  
**8MM X 140MM X 565MM**

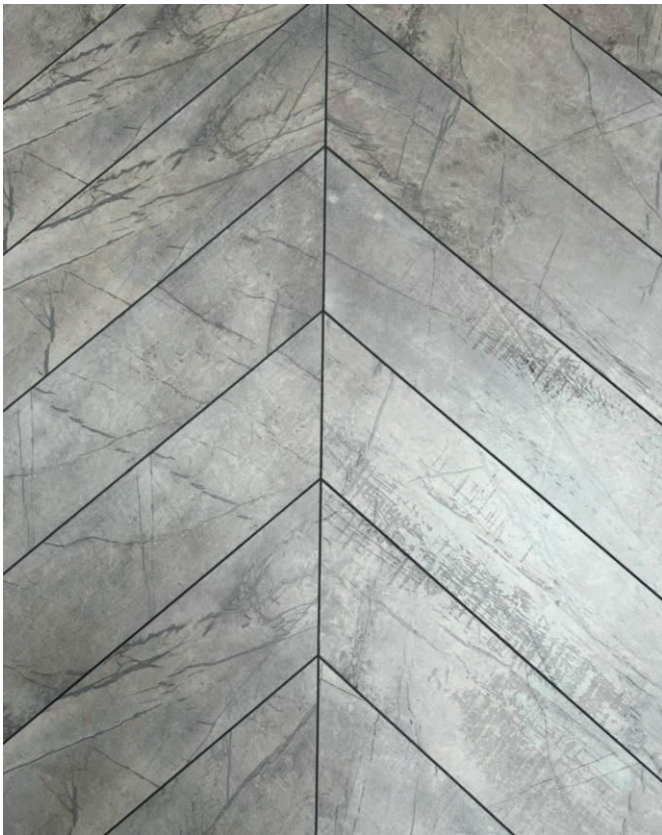




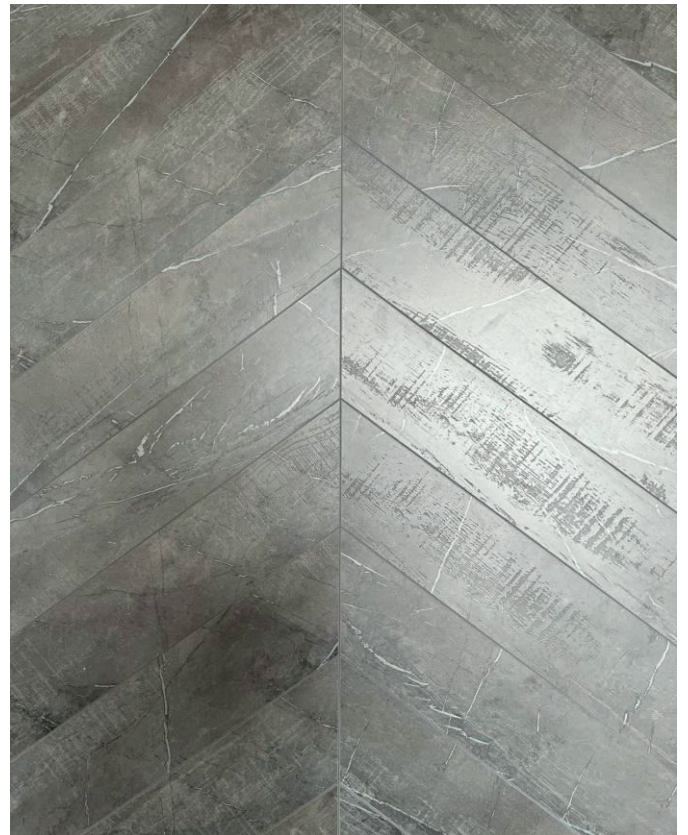
**FRANCES CHEVRON BRERA**  
**8MM X 140MM X 565MM**



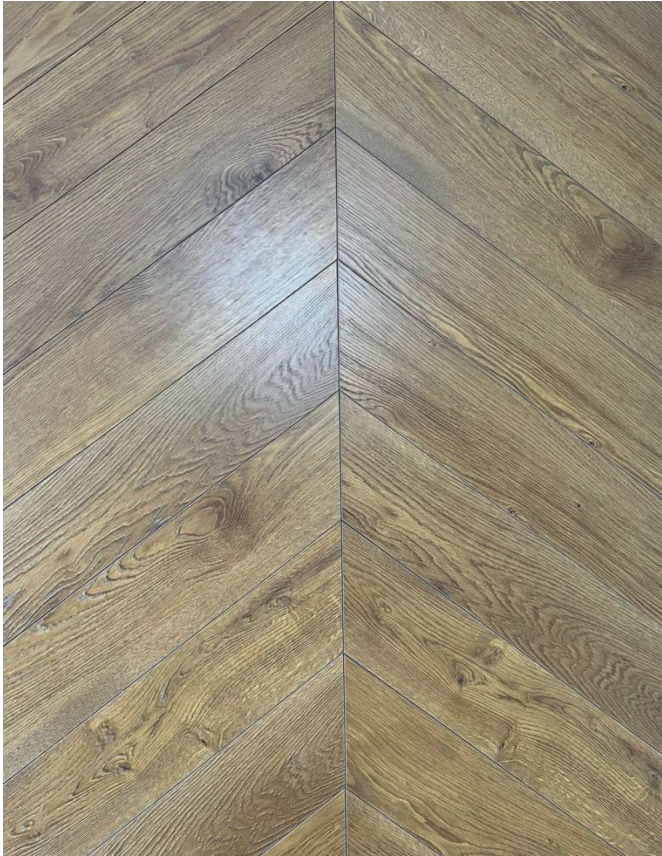
**FRANCES CHEVRON NITRO DARK OAK**  
**8MM X 140MM X 565MM**



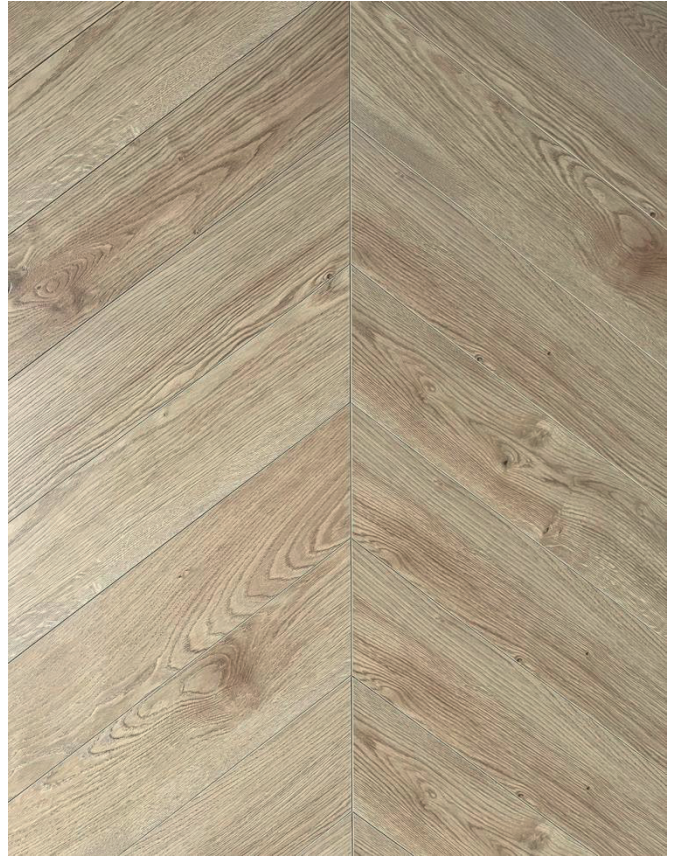
**FRANCES CHEVRON NITRO LIGHT OAK**  
**8MM X 140MM X 565MM**



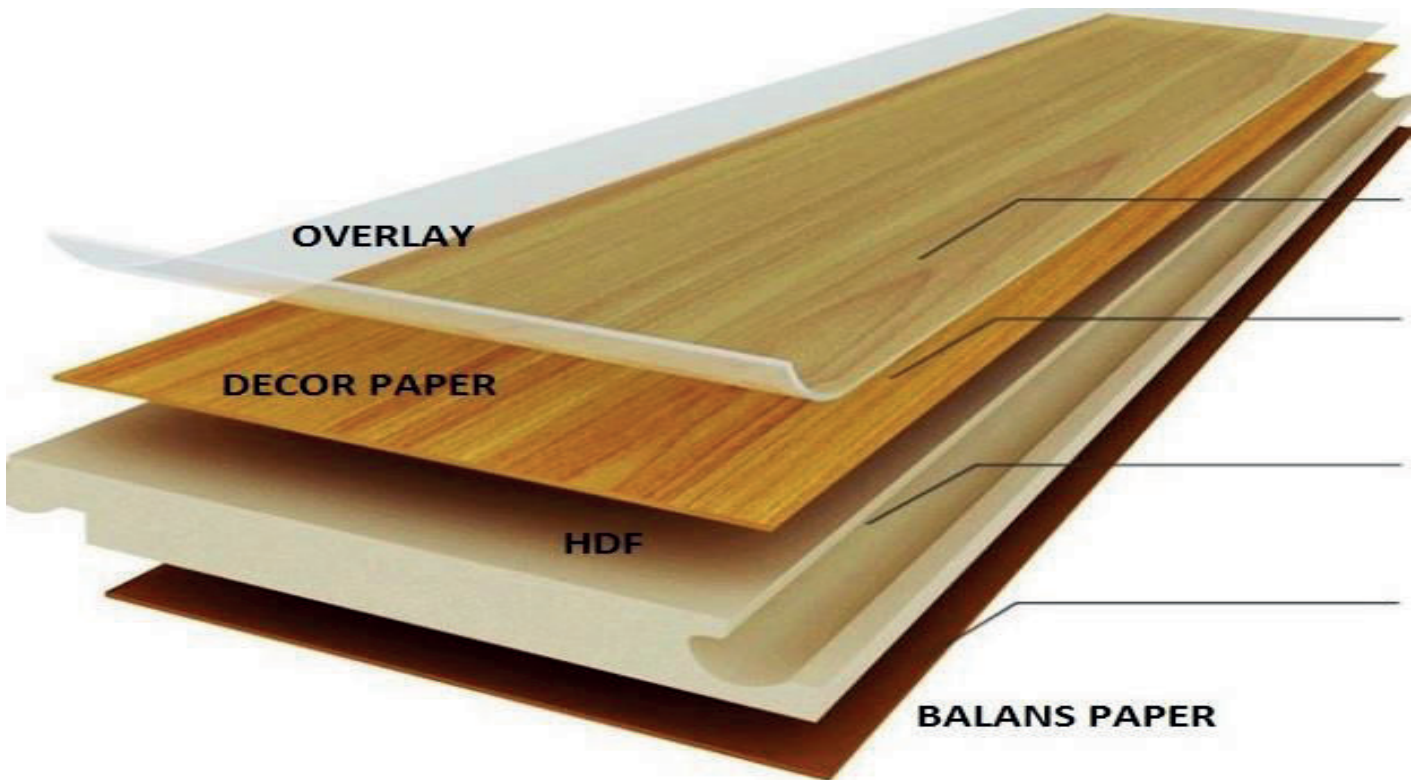
**FRANCES CHEVRON NITRO GREY OAK**  
**8MM X 140MM X 565MM**



**FRANCES CHEVRON ENGLISH DARK OAK  
8MM X 140MM X 565MM**



**FRANCES CHEVRON ENGLISH NATUR OAK 8MM X  
140MM X 565MM**



**1.OVERLAY:** Film layer impregnated with aluminum oxide and melamine resin.

Thanks to aluminum oxide, it has gained resistance against abrasion, scratching and heat.

In addition, melamine resin which melts and hardens during pressing reduces the adhesion of dirt and stains on the surfaces, helps easy cleaning and provides hygiene.

**2.DECOR PAPER :**It is obtained by transmitting one-to-one photographs of natural trees to special papers by high-tech methods

**3.HDF :**High density, non-carcinogenic substance (E1 standard) and moisture resistant fiber board.

**4.BALANCE PAPER:**Produced from paper obtained from high stabilized wood type fibers,impregnated with melamine resin,Moisture resistance.its a layer that provides Parquet boards.Paraffin:Paraffin is applied to the lock edges of the parquets during production and and creates film layer. It makes the joints of the panels more resistant to moisture.

## FEATURES OF ASTONLOUIS LAMINATED PARQUETS

Abrasion Resistance

Suitable for underfloor heating

Natural

Easy Cleaning

Stain-Proof

Stratch-Proof

Suitable for home,Office and workplaces

Light-Resistance

Non-carcionogenic substances(E1 standard)



[www.astonlouis.com](http://www.astonlouis.com)

[info@astonlouis.com](mailto:info@astonlouis.com)

HEAD OFFICE: PEGA KARTAL KULE. NO:6 A/BLOK OFFICE:125 SOĞANLIK  
YENİ MAH. KARTAL/İSTANBUL/TURKEY