



akdelo[®]
forest products ground materials
import export
marketing industry and trade
LIMITED COMPANY



ASTONLOUIS
LUXURY PARQUET

ASTONLOUIS PARQUET

The Best Boutique Parquet In The World

akdelo

Forest Products Ground Materials Import Export Marketing Industry and Trade
LIMITED COMPANY

Mobile Company: +90 532 250 65 29

Phone: +90 212 111 11 11

Address: Atakent Mah. 243. Sk. No:6 Tema Istanbul Sitesi 7/B No:1 Hakkari / K.çekmece Istanbul / TÜRKİYE

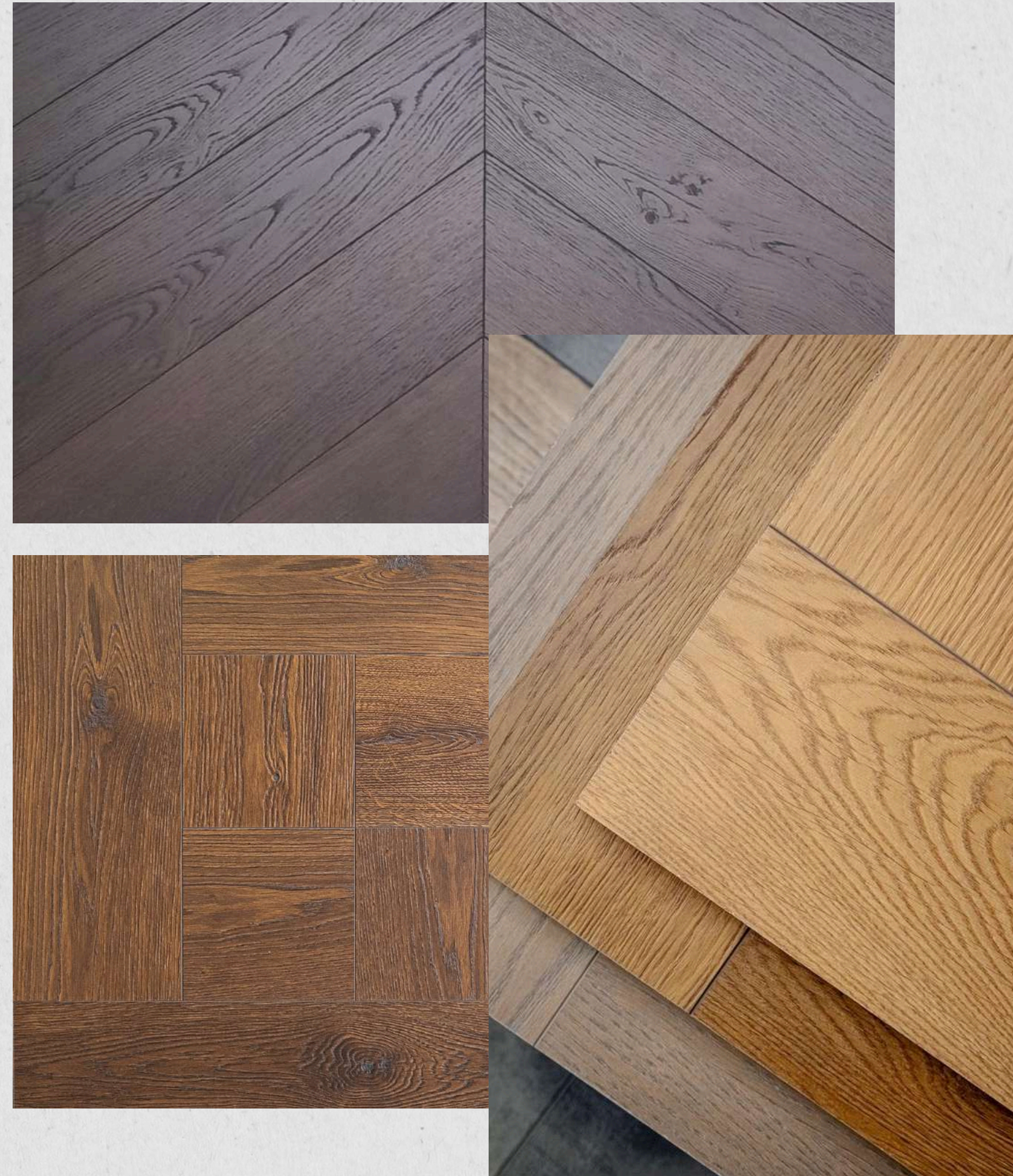


akdelo[®]
forest products ground materials
import export
marketing industry and trade
LIMITED COMPANY

www.akdelo.com.tr
info@akdelo.com.tr

[akdelo](#)
[akdeloosman](#)

We always listen to all needs to personalize our products. Our philosophy is the fact that we blend and maintain the quality of old craftsmanship with a modern and creative approach for many years. Although the process methods have changed and developed according to the past, our love for this valuable material has remained unchanged from the past to the present and this passion has enabled us to enrich the wood products we produce. The roots of our company are proof of the values that characterize our products and the way we work. This adventure, which we started with a small workshop in 1963, has led our company to establish a boutique Laminate flooring production facilities in 2018 with its experience and knowledge gained through the production of wooden parquet for many years. We produce safe and durable wooden floors and take care not to harm the nature. Wooden floors are our passion, our philosophy is the high quality of our work. We are trying to design the colors and textures that protect the original smell and feel of the wood. We prefer raw materials produced from recyclable forests to produce such valuable products for our customers.



Herringbone

8mm X 140 mm X 595 mm AC.4 4V

Aston Louis Herringbone laminate flooring is designed to give the same effect as real solid wood flooring. Aston Louis Herringbone Laminate flooring has a modern structure that makes it striking, unique and remarkable than standard and flat laminate flooring. The Aston Louis Herringbone laminate collection is alternative Herringbone engineering floor collection. It has AC4 commercial classes, so it can be used in truly demanding and commercial buildings, and is more than suitable for any home. Ideal for a lounge, kitchen, dining room or hallway. Especially Herringbone Laminate flooring decors are surely will create a chat environment



8 mm X 140 mm X 595 mm AC4 4V



BRERA



ENGLISH ROBOSTO



HAVANNA



ENGLISH NATUR



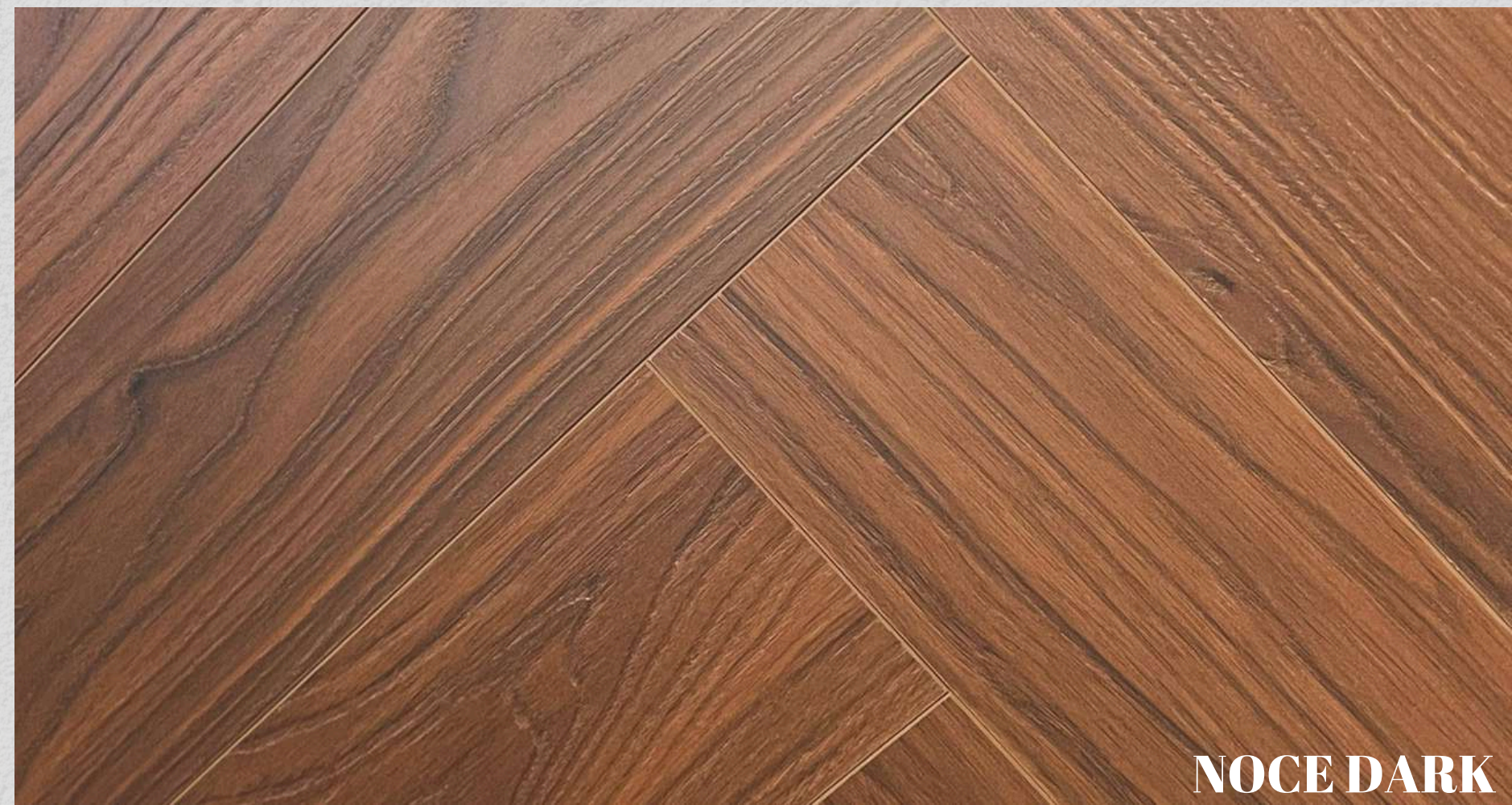
ENGLISH LIGHT



ENGLISH DARK



ENGLISH MOUNTAIN



NOCE DARK



SILVERADO CREAM



SILVERADO LIGHT



SILVERADO DARK



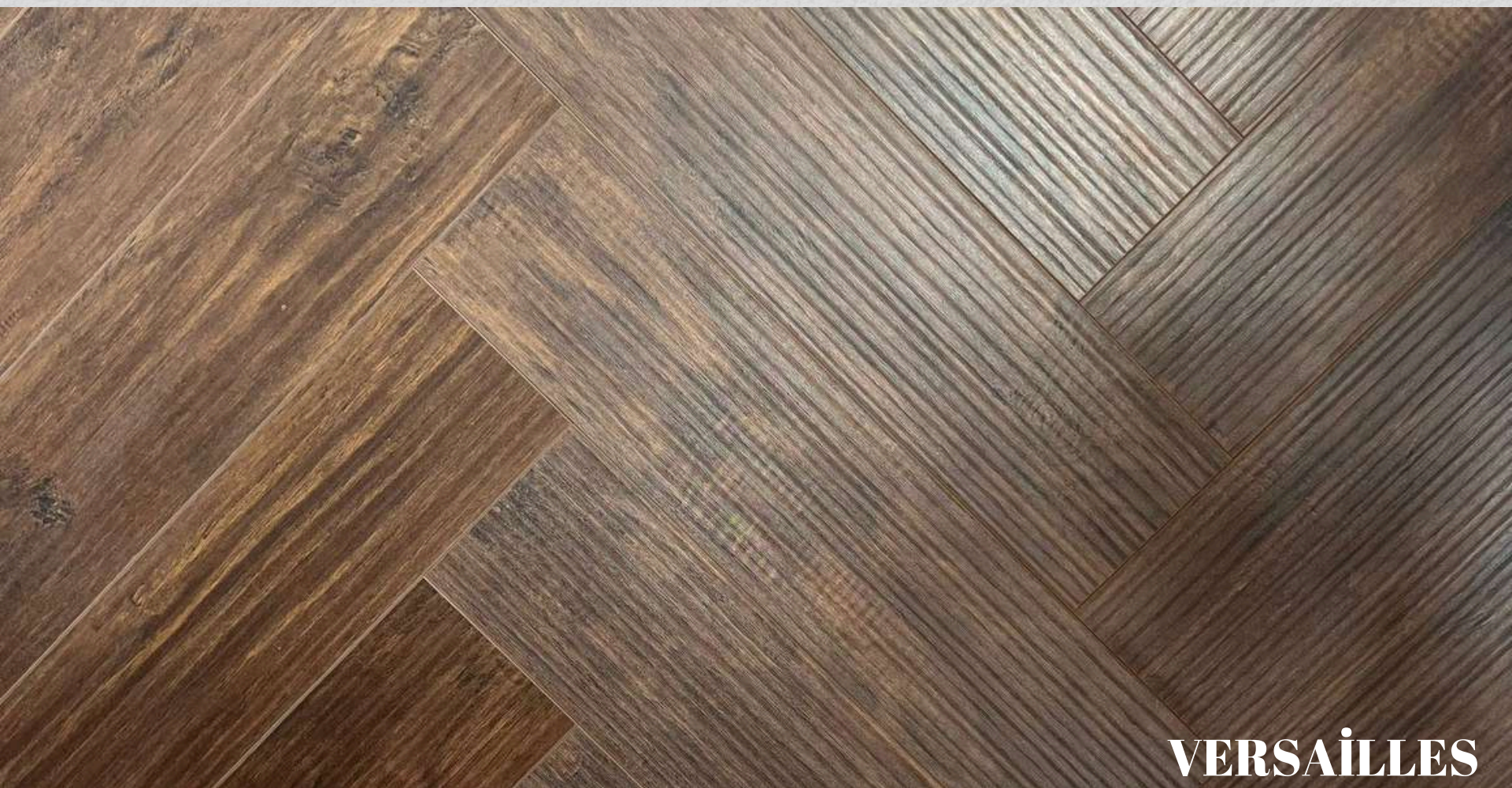
SILVERADO GREY



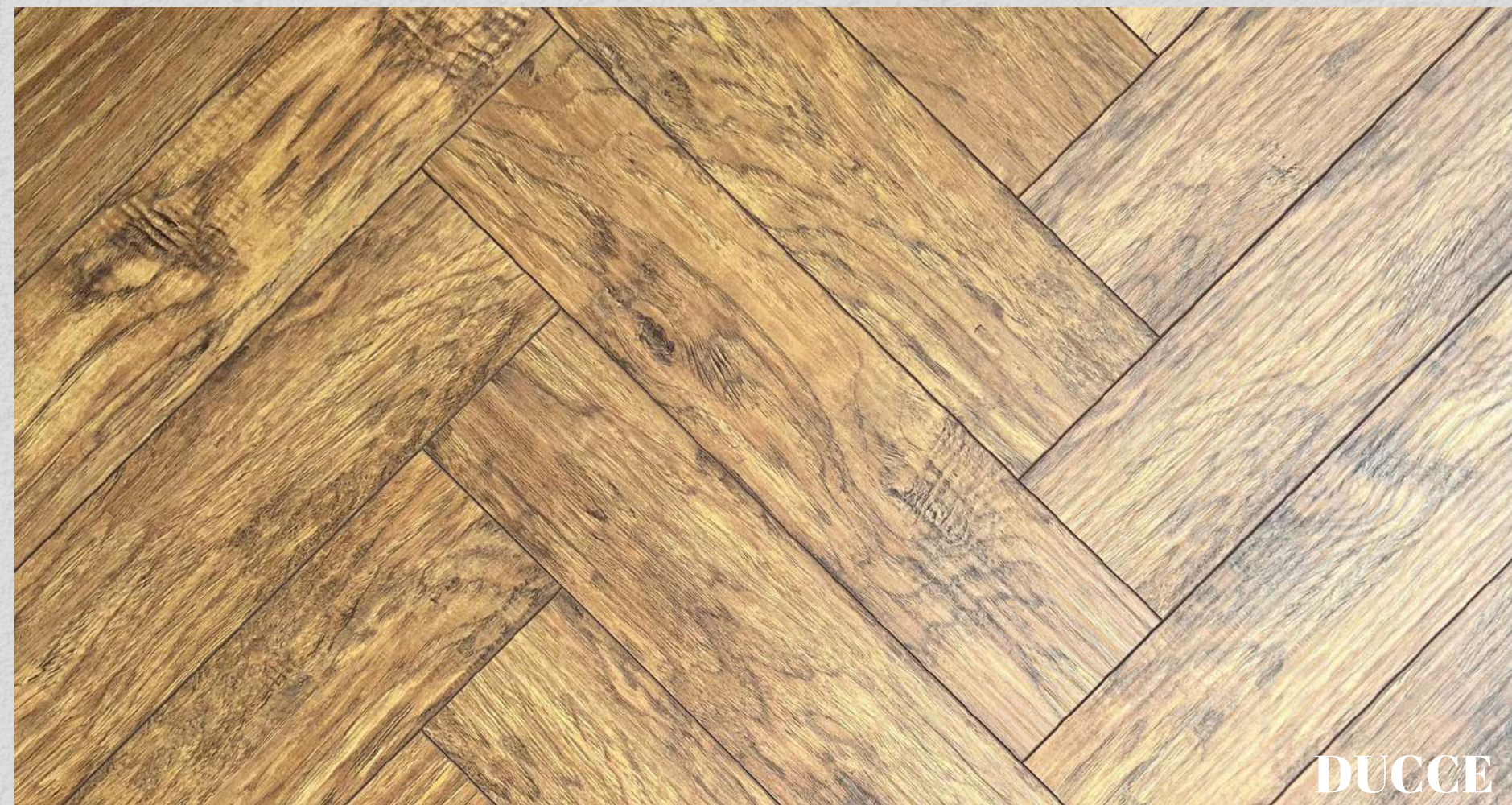
CAVALLO



BELLEVUE



VERSAILLES



DUCCE



BURUNETTA



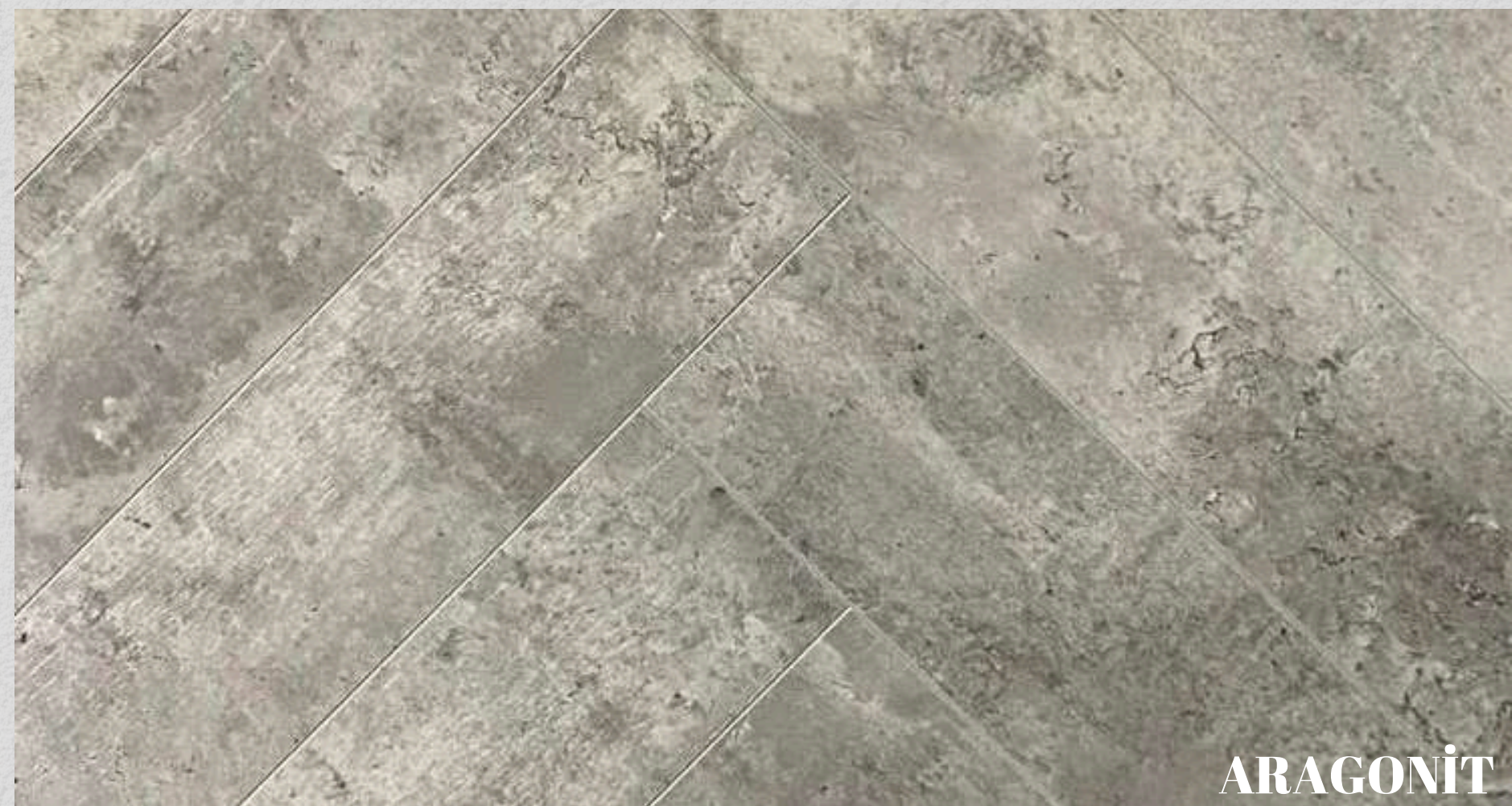
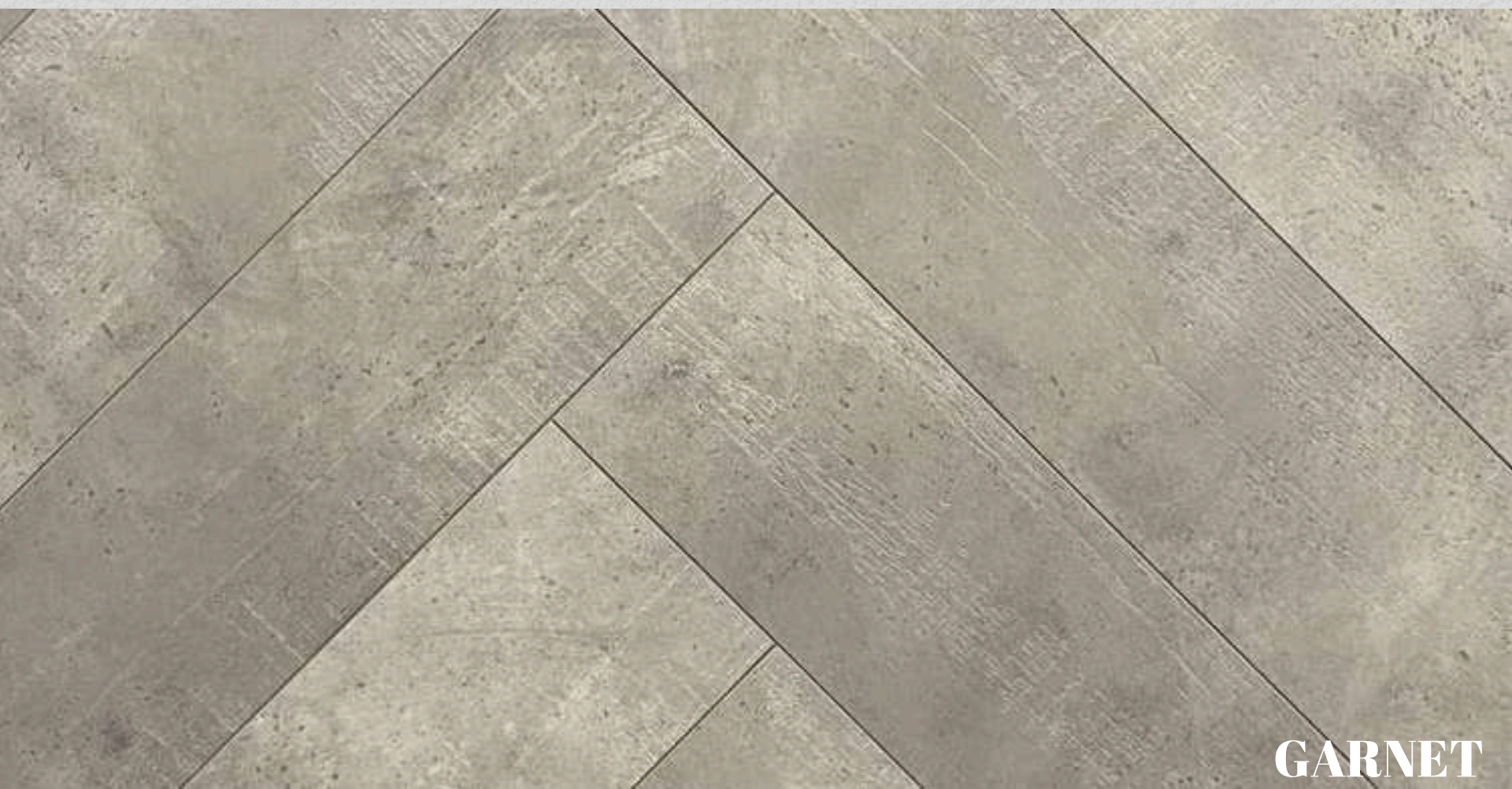
VEGA



WHITE PALACE



RARO



Marquetry

12 mm x 600 mm x 600 mm AC.4 4v

AstonLouis Laminated Parquets is proud to present Marquetry Parquets, which increases the value of your flooring. We reveal a delicacy that explains the essence of wood with its elegant charming designs with Marquetry Laminated Floorings. We use the best wood quality to reuse the beauty of your floor in new trends of the time.

AstonLouis Marquetry laminate flooring has been designed to survive over time, preserving its natural beauty and technical features

AstonLouis Marquetry Laminate flooring is designed in a boutique manner with 50% hand workmanship designed in 32 Class AC 4 wear resistance and 12 MM 600MM * 600MM dimensions in order to feel your living spaces in the comfort of the palace.







ELDORADO

GODIDA

FORMENTERA



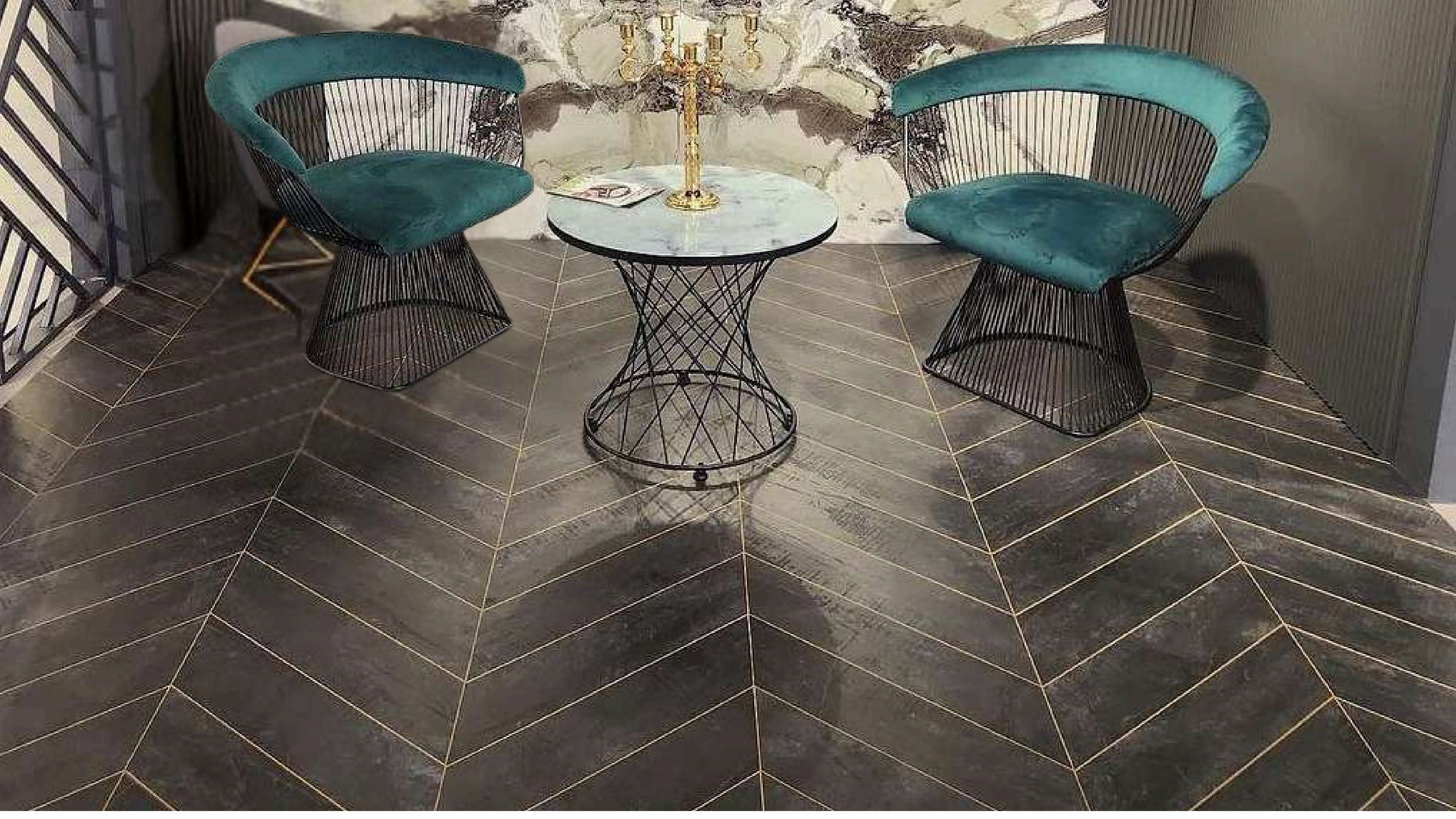
FRANCES CHEVRON

8 mmX 140 mm X 565 mm AC.4. 4V

Aston Louis Frances Chevron laminate flooring is designed to give the same effect as real solid wood flooring. Aston Louis Frances Chevron Laminate flooring has a modern structure that makes it striking, unique and remarkable than standard and flat laminate flooring.

The Aston Louis Frances Chevron laminate collection is alternative Chevron engineering floor collection. It has AC4 commercial classes, so it can be used in truly demanding and commercial buildings, and is more than suitable for any home. Ideal for a lounge, kitchen, dining room or hallway. Especially Frances Chevron Laminate flooring decors are surely will create a chat environment.



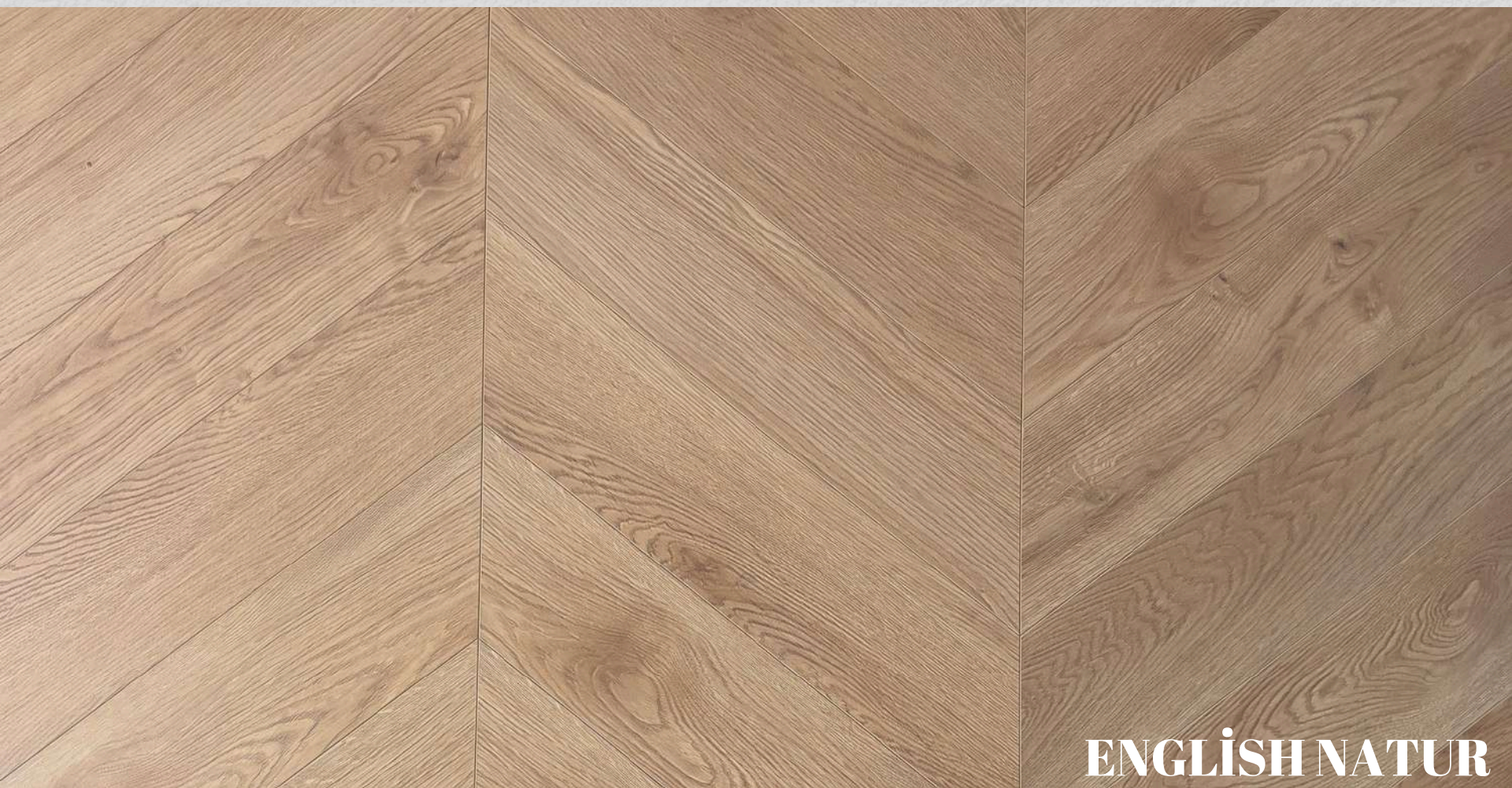




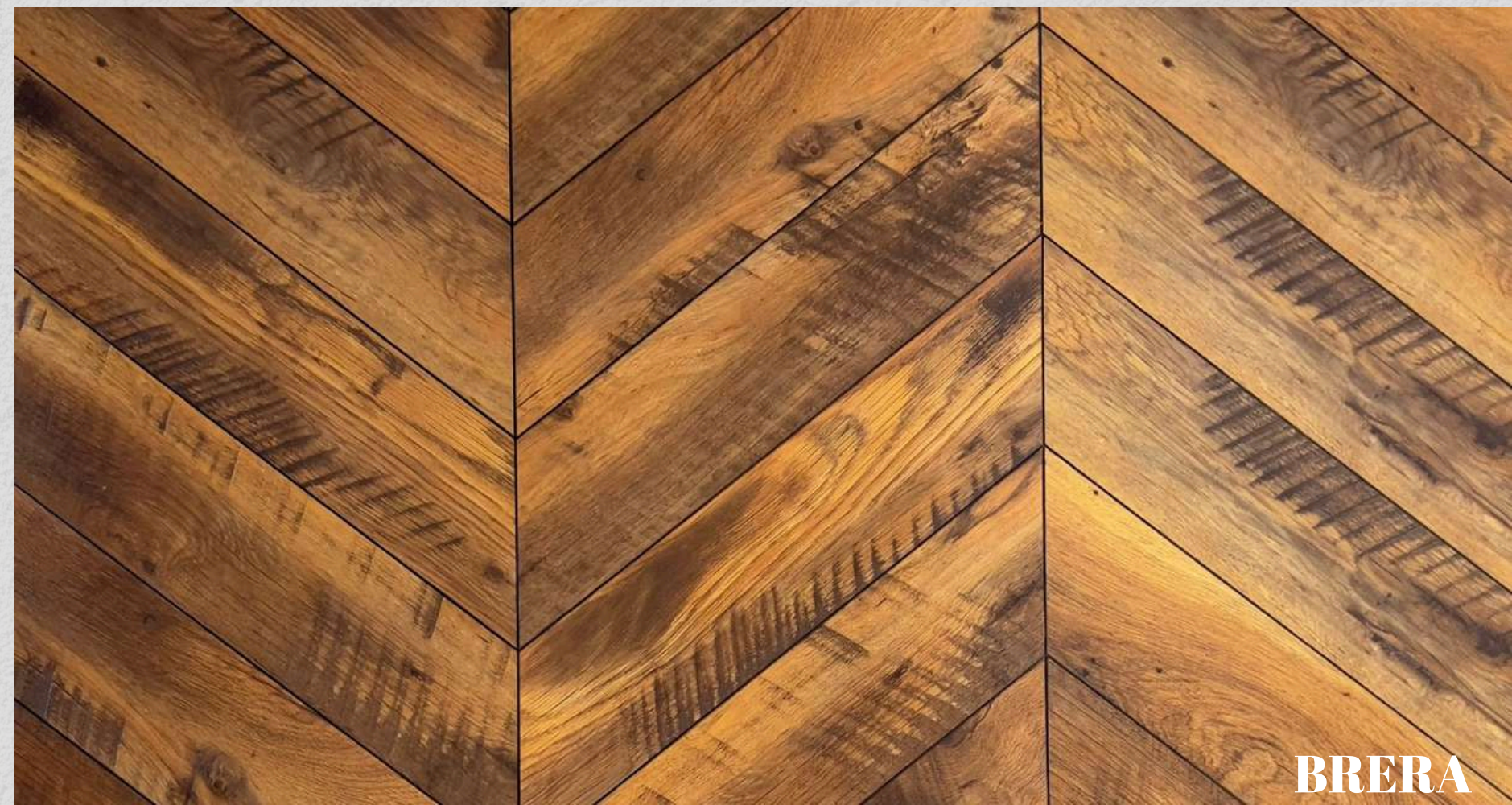
ENGLISH ROBOSTO



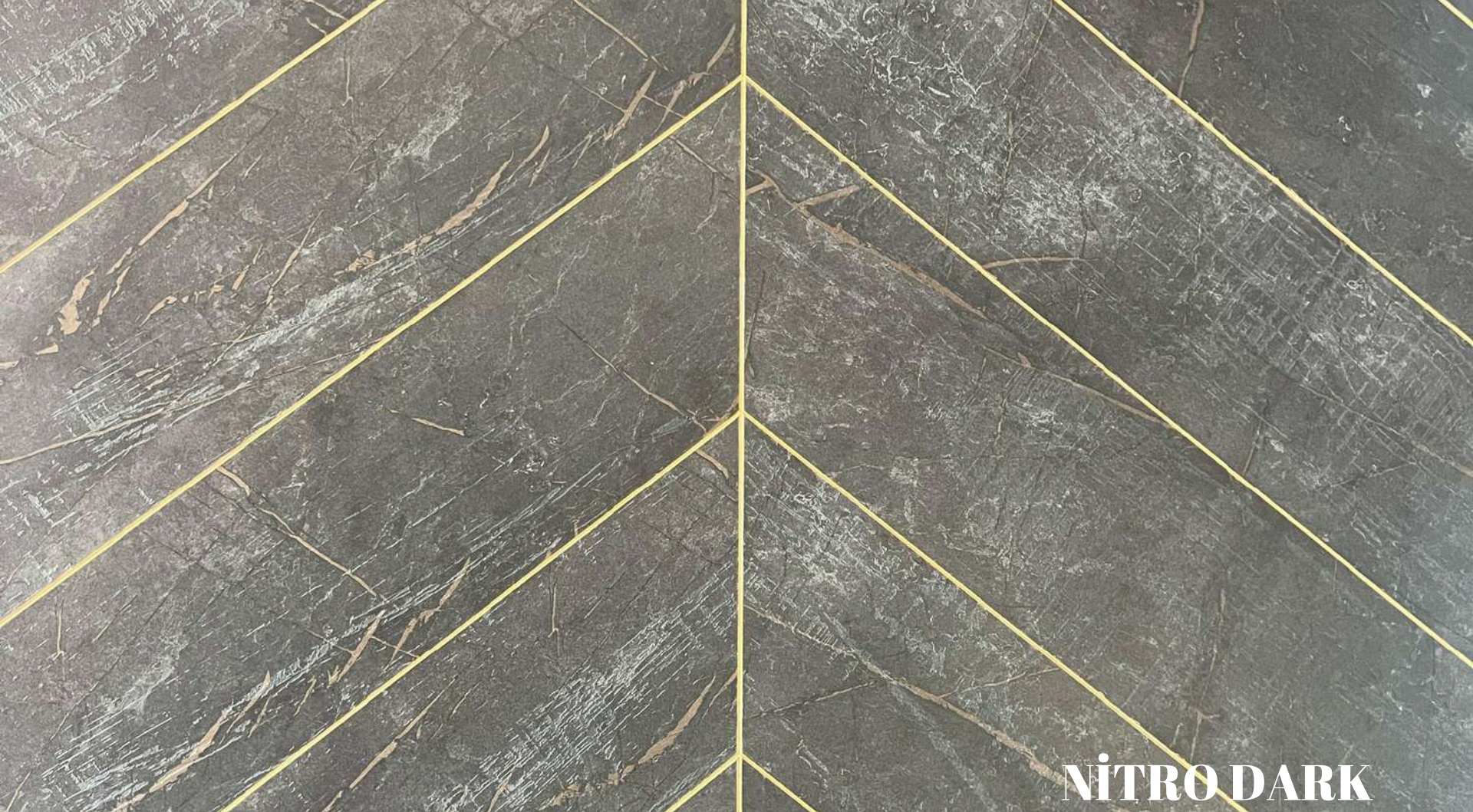
ENGLISH DARK



ENGLISH NATUR



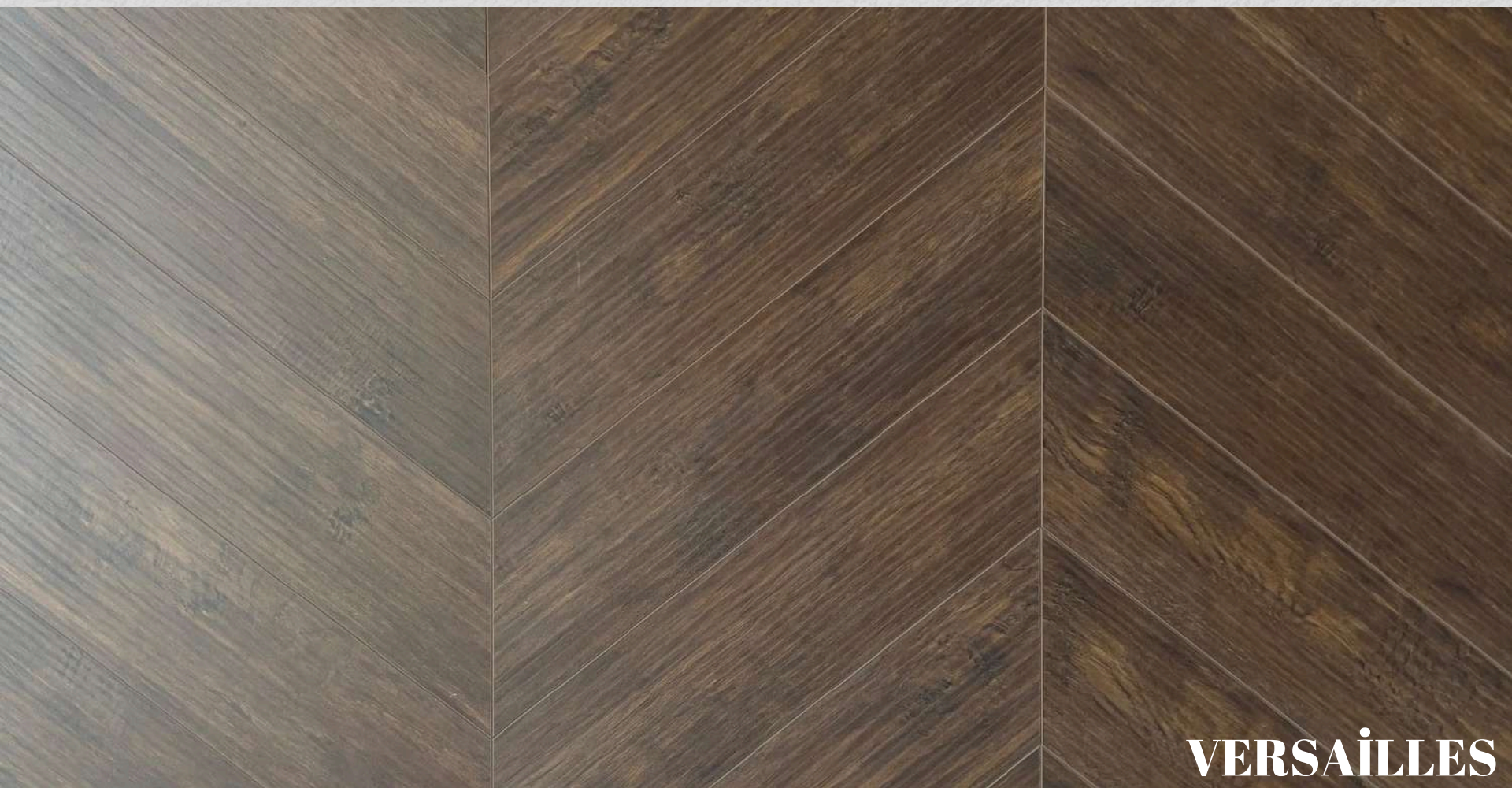
BRERA



NITRO DARK



NITRO GREY



VERSAILLES



ENGLISH LIGHT



HAVANNA



PUZZLE MARQUETRY

8 mm x 189 mm x 567 mm - 8 mm 189 mm X 189 mm AC.4





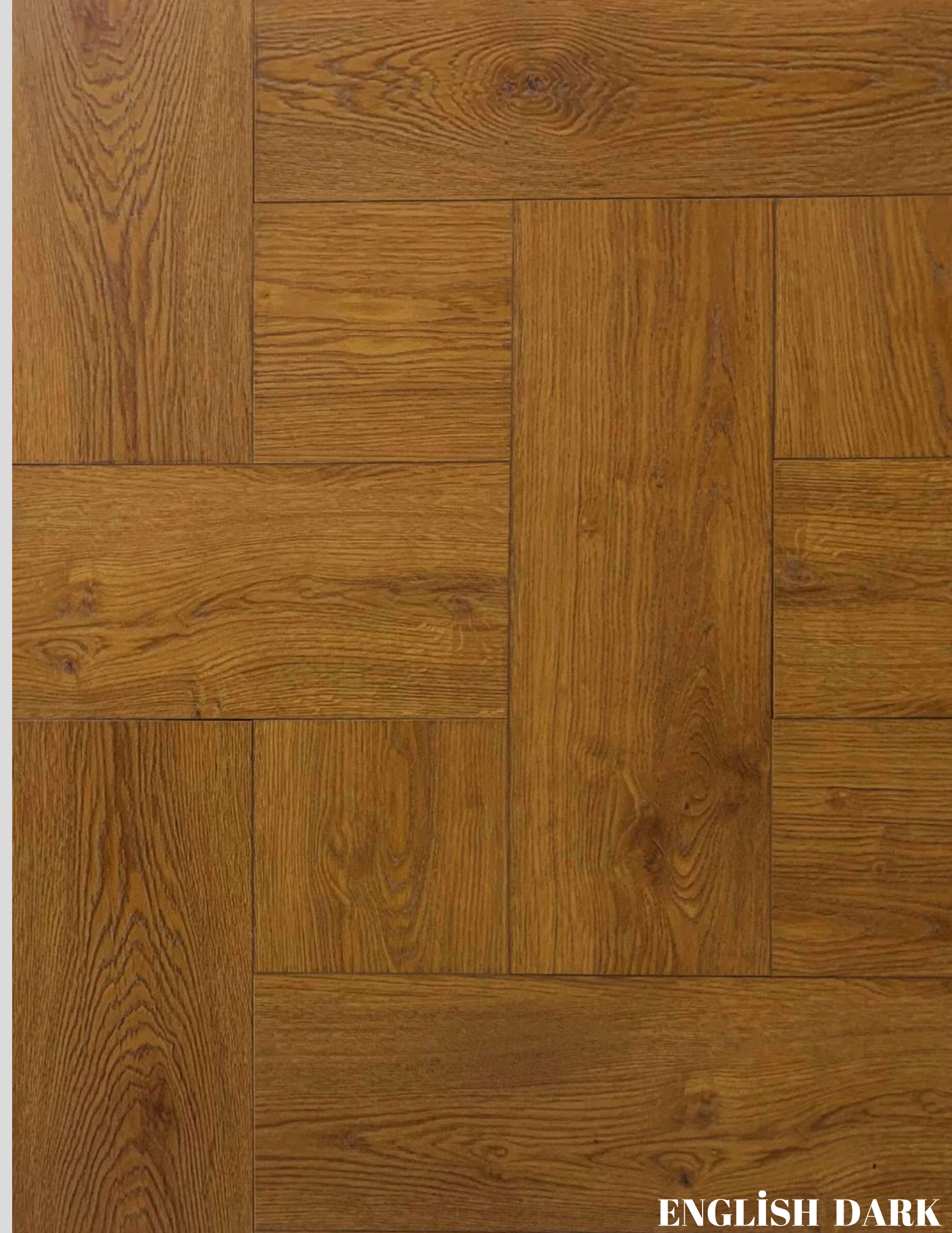
ENGLISH ROBOSTO



ENGLISH NATUR



ENGLISH DARK



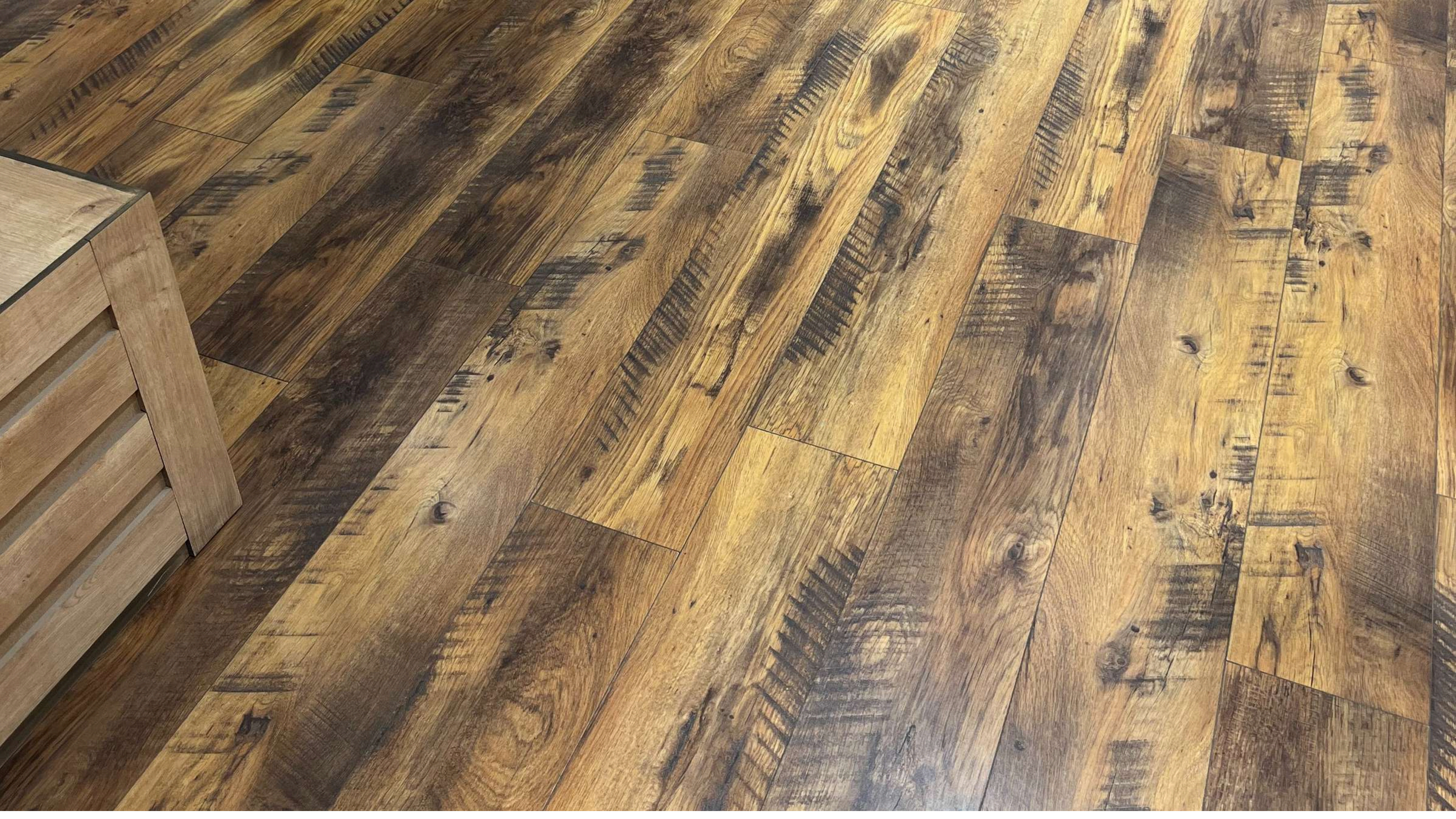
ENGLISH DARK



BIG size

8 mm X 189 mm X 1813 mm AC.4 4V





FEATURES OF ASTONLOUIS LAMINATED PARQUETS

Abrasion Resistance

Suitable for underfloor heating

Natural

Easy Cleaning

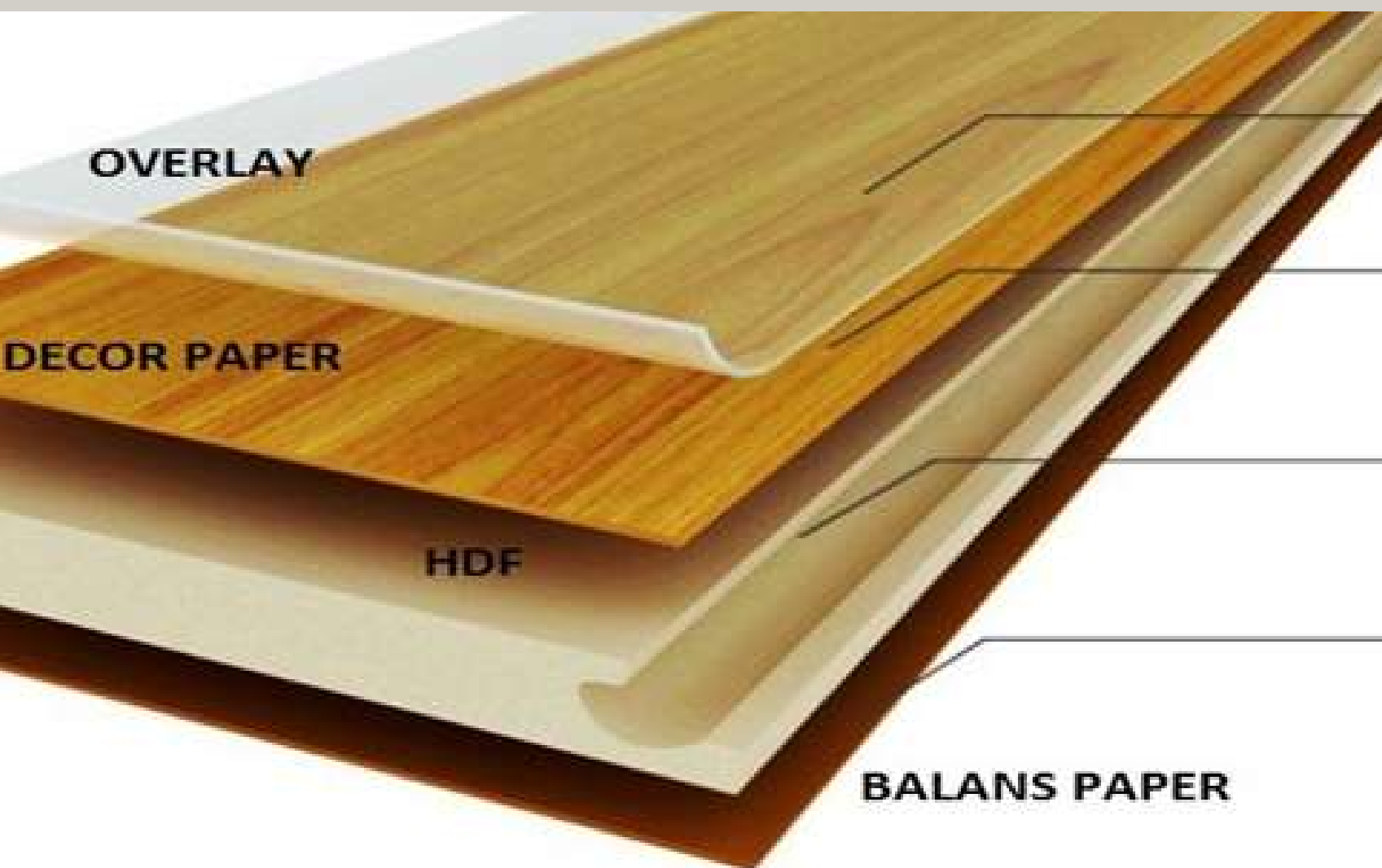
Stain-Proof

Stratch-Proof

Suitable for home,Office and workplaces

Light-Resistance

Non-carcionogenic substances(E1 standard)



ASTON LOUIS PARQUET LAMINAT LAYERS

1.OVERLAY: Film layer impregnated with aluminum oxide and melamine resin.

Thanks to aluminum oxide, it has gained resistance against abrasion, scratching and heat.

In addition, melamine resin which melts and hardens during pressing reduces the adhesion of dirt and stains on the surfaces, helps easy cleaning and provides hygiene.

2.DECOR PAPER :It is obtained by transmitting one-to-one photographs of natural trees to special papers by high-tech methods

3.HDF :High density, non-carcinogenic substance (E1 standard) and moisture resistant fiber board.

4.BALANCE PAPER:Produced from paper obtained from high stabilized wood type fibers,impregnated with melamine resin,Moisture resistance.its a layer that provides Parquet boards.Paraffin:Paraffin is applied to the lock edges of the parquets during production and and creates film layer. It makes the joints of the panels more resistant to moisture.

ASTON LOUIS PARQUET OFFERS GUARANTEES FROM THE DATE OF PURCHASE AND THESE ARE;

It is offer for 10-year to 25-year warranty, depending on the product group when it is installed in residences. Aston Louis Laminate Flooring has a 10 year guarantee for business places. The following warranty terms valid for Aston Louis Laminate Flooring: Our warranty covers home and commercial applications and applies only to the mentioned items.

(hygiene, impact resistance, long life), But; When installed in commercial areas, separate warranty period is offered, maximum for 10 years. AstonLouis Laminate Flooring should be used for its intended purpose and in accordance with the maintenance instructions. Parquets should not be subjected to extraordinary mechanical stresses, which are not suitable for normal use.Or must not be cleaned incorrectly. The warranty is non-transferable, only to the first purchaser has guarentee and applies to the initial application of Aston Louis Laminate Flooring. Laminate Flooring should be installed to suitable areas.

Laminate Flooring should be installed in accordance with the installation manual. Failure to comply with these terms will void all warranty claims. Wear; means that the decor layer must be completely raised in at least one location, and that it must be clearly visible, in an area of at least 1cm². Small traces of use on the surface of the laminate flooring do not constitute damage. Damage caused by sharp-edged objects and tips is not covered by the warranty. The height of falling objects must not exceed 90cm. Objects weight should not exceed 0.5 kg.

MAINTANENCE AND PROTECTION OF ASTONLOUIS LAMINAT PARQUETS

Never apply in damp or wet environments.Since the closed surface of Astonlouis laminate flooring generally prevents dirt from penetrating deep into the flooring.Cleaning AstonLouis parquet with water can cause undesirable swelling of parquets.When -you are choosing your cleaning products be sure they are not contains oil and wax.Unlike solid parquets, oil and wax penetrate the surface of the laminate flooring and remain a thin layer on the Parquet.This film may cause unwanted fine cracks on the surface and may show footprints

For regular maintenance of AstonLouis laminate flooring, it is necessary to periodically vacuum your laminate and wipe it with a dry cloth.If necessary, you can wipe the floor every two weeks with a damp cloth.Use laminate flooring cleaning material, then rinse the cloth thoroughly, and then wipe the floor with a dry cloth.When using a solvent or condensed cleaning solution, read the safety recommendations first!(Never use bleach)

Below you will find recommendations for removing stains on Astonlouis Laminate flooring.

Gum and wax stains can be removed using a plastic scraper (not sharp).After the stain hardens from Laminat flooring.

Removal of stains from fruit, milk, alcohol, rubber, plastic, heel and foodstuff from laminate; Remove the stain using a dry absorbent cloth. If the stain is dried, clean it with the appropriate cleaning solution, and then wipe it dry with a dry cloth.

Use felt bolts and rubber chair rollers for furniture legs to preserve the value of your laminate floor.Suitable for castor chairs with DIN 68131 Type ‘w’.

Room temperature should be 18-22 C, air humidity 50-60%.

The Best Boutique Parquet In The World

HEAD OFFICE:

Soğanlık Yeni Mah.Pegagaz Sk.Pega
Kartal Kule No: 6 / A Floor:20 Office 125
Kartal/ istanbul / Türkiye

www.astonlouis.com

info@astonlouis.com