



NAIROBI PA
CARPET TILE

NAIROBI PA CARPET TILE



akdeio

Forest Products Ground Materials Import Export Marketing Industry and Trade
LIMITED COMPANY

Mobile: +90 532 500 51 52 Mobile Company: +90 532 250 65 29

Phone: +90 212 111 11 11

Address: Atakent Mah. 243. Sk. No:6 Tema İstanbul Sitesi 7/B No:1 Halkalı / K.çekmece İstanbul / TÜRKİYE

Address: Khelvachauri, Akhalshehis Meurneoba Mah. 3-CU Sk. No: 26 Batumi / GEORGIA

Akdeio Orman Ürünleri Zemin Malzemeleri İthalat İhracat Pazarlama San. ve Tic. LTD. ŞTİ.



www.akdeio.com.tr

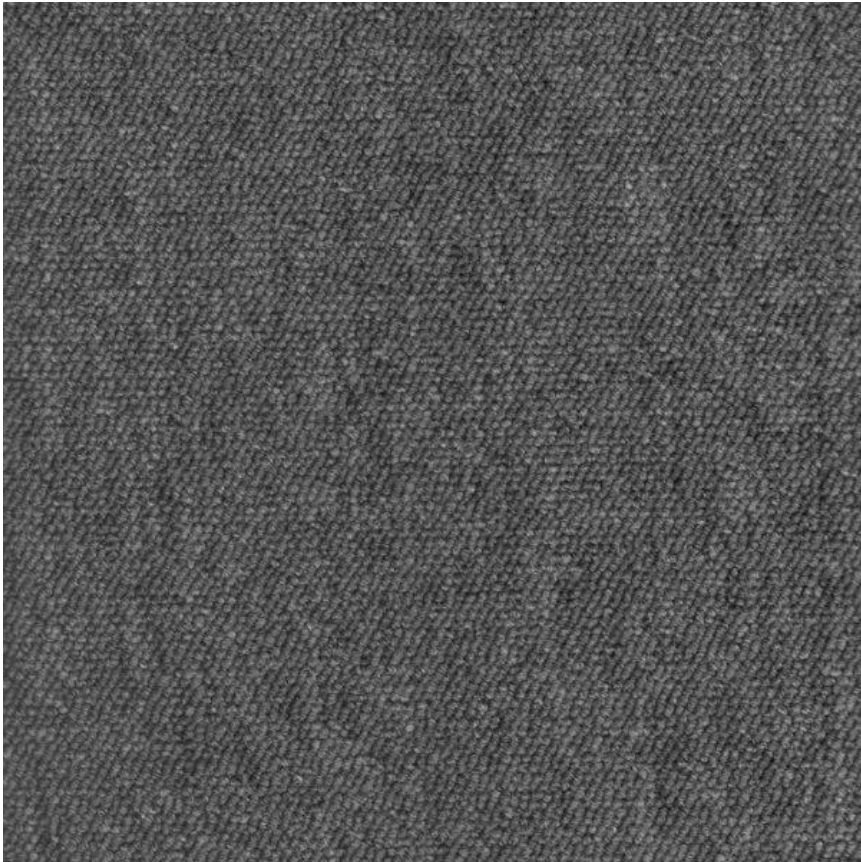
info@akdeio.com.tr

onder@akdeio.com.tr

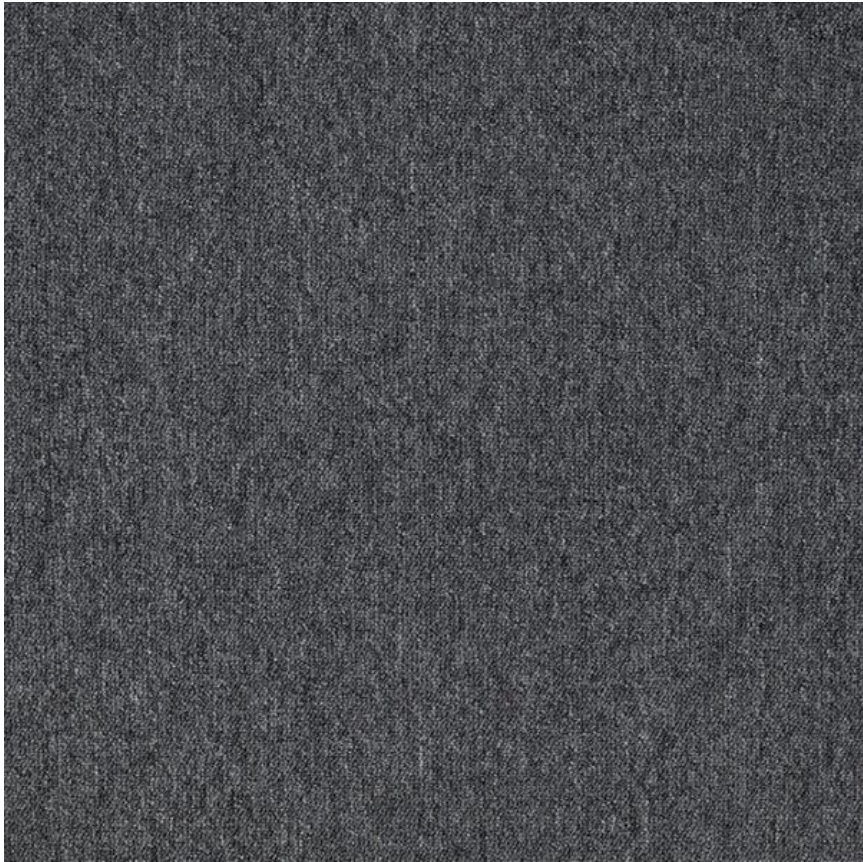
akdeio

akdeioorman

Nairobi PA

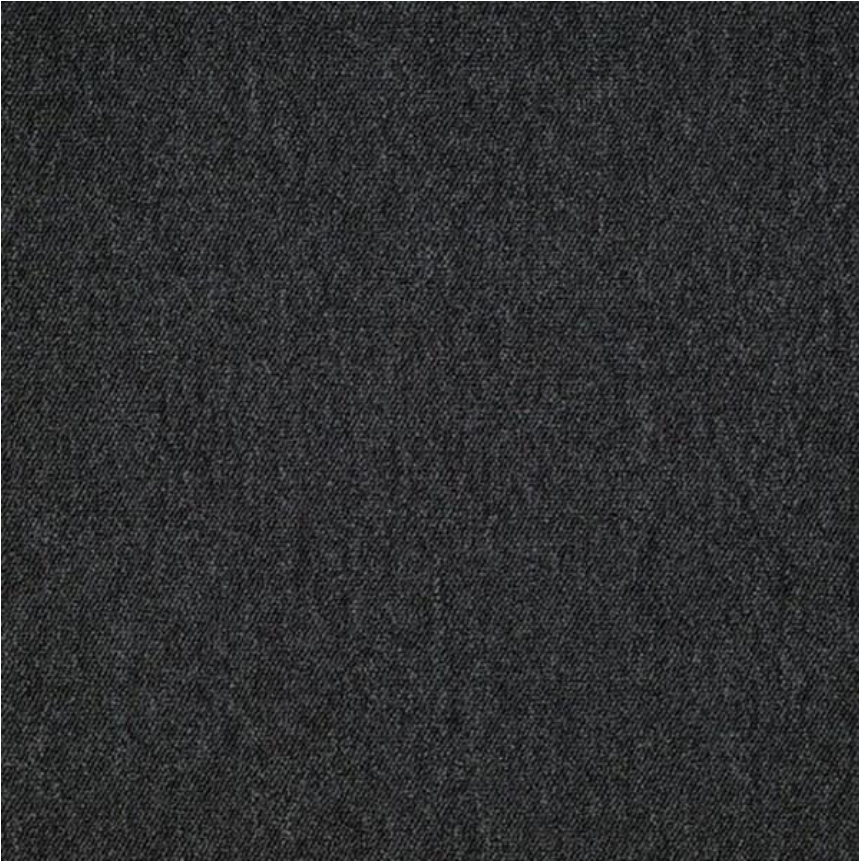


Nairobi 672 Grey

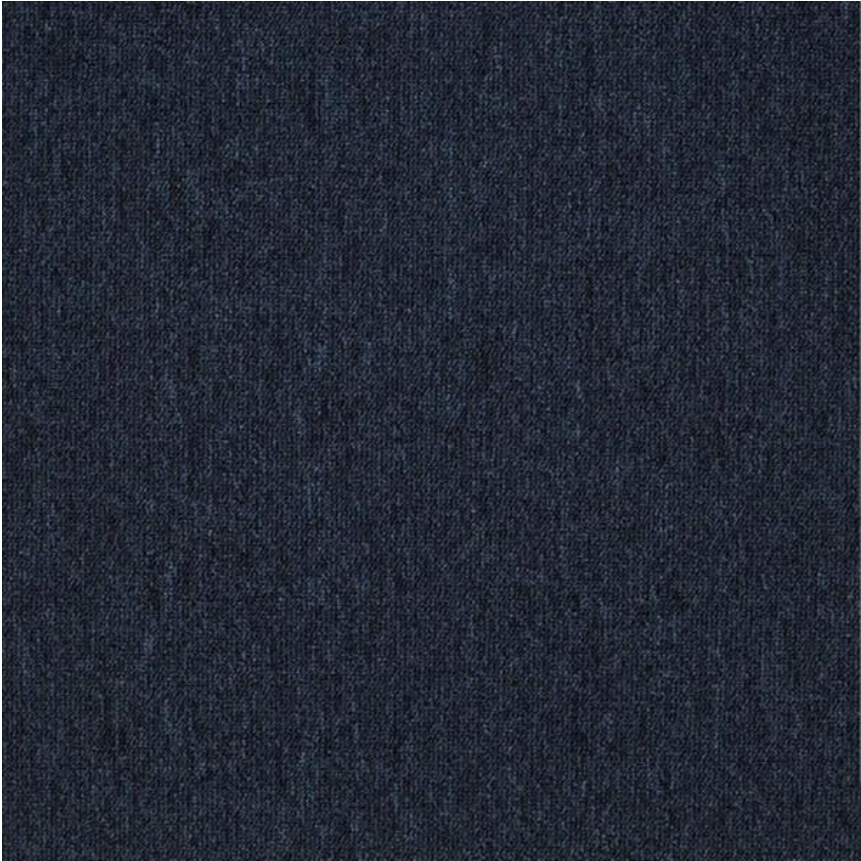


Nairobi 676 Anthracite

Nairobi PA



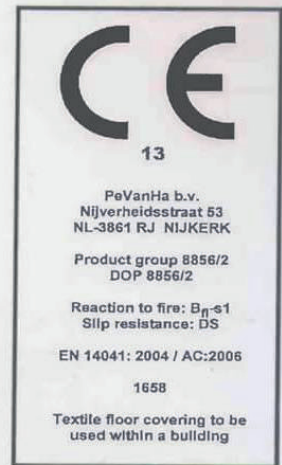
Nairobi 678 Black



Nairobi 683 Inkwell

AZM Nairobi PA Specification Sheet

Quality		: AZM Nairobi
Product definition		: tufted loop pile
Gauge	ISO 2424	: 1/10"
No. of tufts	ISO 1763	: 173.360 /m ² (- 7.5% + 10%)
Pile fibre	ISO 2424	: 100% PA SDN
Pile weight	ISO 8543	: 510 gr/m ² (± 5%)
Pile height	ISO 1765	: 3.5 mm (± 5%)
Primary backing	ISO 2424	: PA/PES non-woven - Colback
Tile backing	ISO 2424	: Polyflex
Total thickness	ISO 1765	: 5.2 mm (± 5%)
Total weight	ISO 8543	: 3800 gr/m ² (± 7,5%)
Tile size	EN 986	: 50 x 50 cm (± 0.2 %)
Tiles per box		: 20



PERFORMANCE

Use classification	EN 1307	: 33
Castor chair test	EN 985	: A, continuous use
Thermal isolation	ISO 8302	: Ca. 0,07 m ² K/W
Luxury/Comfort	EN 1307	: LC1
Sound Insulation	ISO 10140	: 24 dB

ELECTROSTATIC PROPERTIES

Walk on test	ISO 6356	: -0.1 kV
Horizontal electrical resistance	ISO CD 10965	: 3x10 ⁸ Ω
Vertical electrical resistance	ISO CD 10965	: 4x10 ¹⁰ Ω
Static loading		: anti-static

FLAME PROPERTIES

Reaction to fire	EN 13501-1	: B _{fl} -s1
------------------	------------	-----------------------

COLOUR FASTNESS PROPERTIES

Light	ISO 105 B02	: > 5
Rubbing, dry	ISO 105 X12	: 5.0
Rubbing, wet	ISO 105 X12	: 5.0
Shampoo	BS 1006	: 5.0
Water	ISO 105 E01	: 4.5
Water stains	TNO W 6024	: 5.0



GENERAL

Recommended maintenance:
Pile direction:

Best results are obtained when cleaned with a dry shampoo method.
Directional arrows are printed on the back of each tile.
Best results are obtained when laid checkerboard.

Laying instructions:

Tiles require no underlay, nailing, gluing or sewing and may be laid loose on a flat, dry, non-slippery floor. When tiles are laid on parquet, vinyl or in open areas larger than 30 m² it is advisable to use double sided adhesive tape on every 8th row or a tackifier.